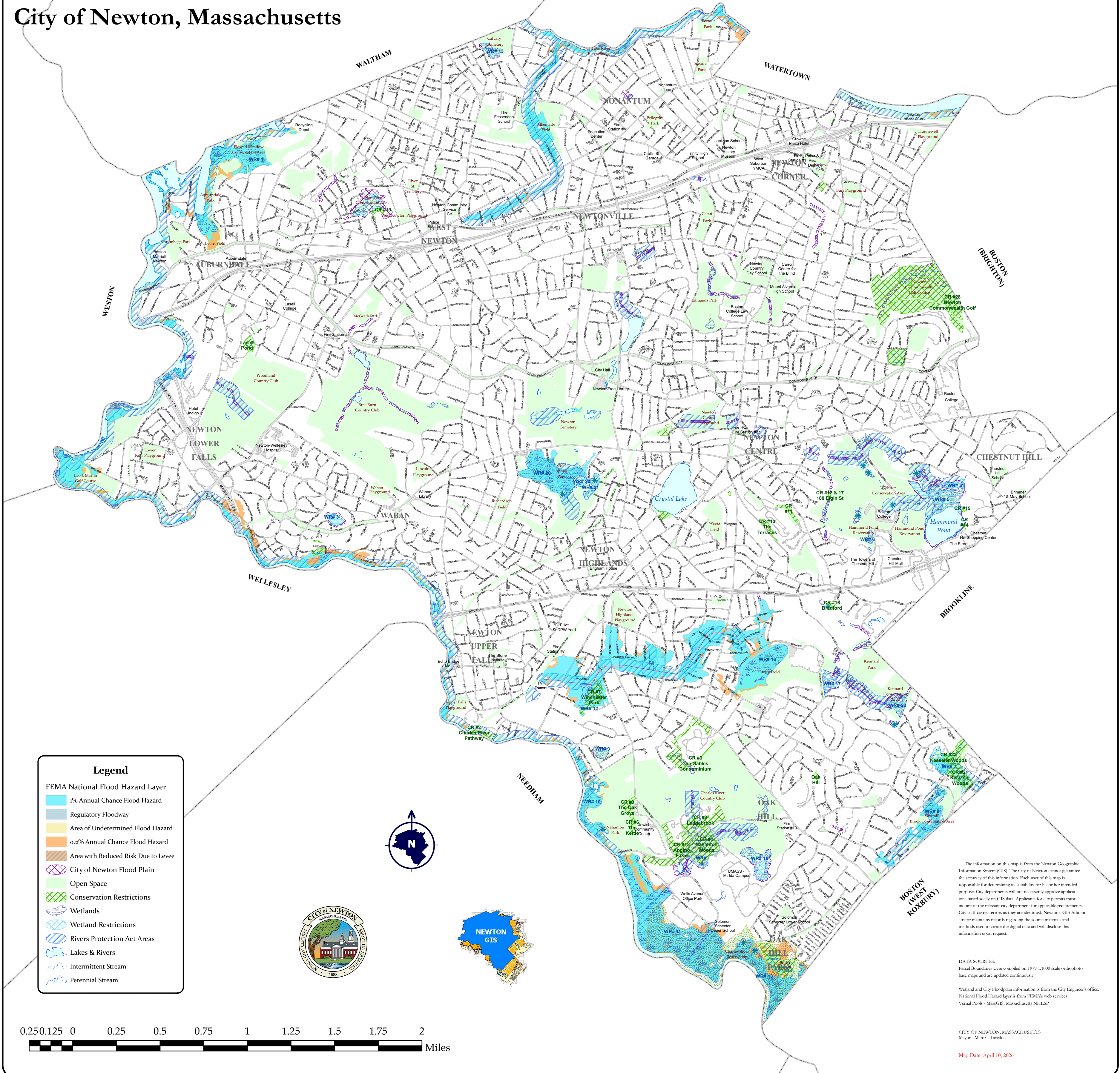


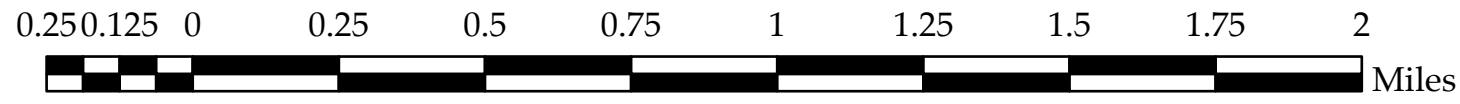
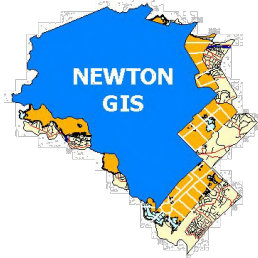
Wetlands, Floodplains and Conservation Areas

City of Newton, Massachusetts



Legend

- FEMA National Flood Hazard Layer
 - 1% Annual Chance Flood Hazard
 - Regulatory Floodway
 - Area of Undetermined Flood Hazard
 - 0.2% Annual Chance Flood Hazard
 - Area with Reduced Risk Due to Levee
- City of Newton Flood Plain
- Open Space
- Conservation Restrictions
- Wetlands
- Wetland Restrictions
- Rivers Protection Act Areas
- Lakes & Rivers
- Intermittent Stream
- Perennial Stream



The information on this map is from the Newton Geographic Information System (GIS). The City of Newton cannot guarantee the accuracy of this information. Each user of this map is responsible for determining its suitability for his or her intended purpose. City departments will not necessarily approve applications based solely on GIS data. Applicants for city permits must inquire of the relevant city department for applicable requirements. City staff correct errors as they are identified. Newton's GIS Administrator maintains records regarding the source materials and methods used to create the digital data and will disclose this information upon request.

DATA SOURCES:
Parcel boundaries were compiled on 1979 1:1000 scale orthophoto base maps and are updated continuously.
Wetland and City Floodplain information is from the City Engineer's office.
National Flood Hazard layer is from FEMA's web services
Vernal Pools - MassGIS, Massachusetts NHESP

CITY OF NEWTON, MASSACHUSETTS
Mayor - Marc C. Laredo

Map Date: April 10, 2026