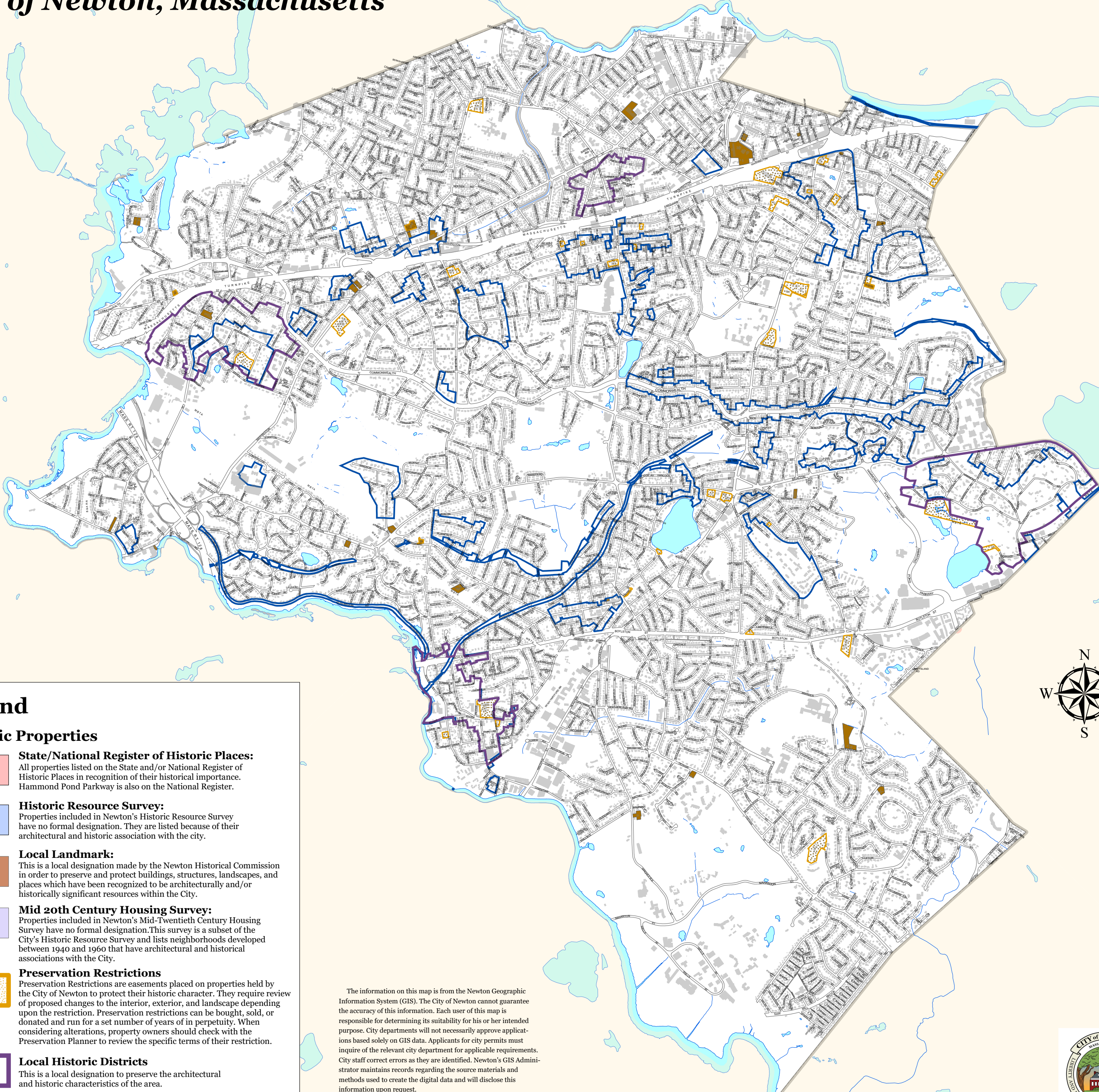


Historic Properties

City of Newton, Massachusetts



Legend

Historic Properties

- 
State/National Register of Historic Places:
 All properties listed on the State and/or National Register of Historic Places in recognition of their historical importance. Hammond Pond Parkway is also on the National Register.
- 
Historic Resource Survey:
 Properties included in Newton's Historic Resource Survey have no formal designation. They are listed because of their architectural and historic association with the city.
- 
Local Landmark:
 This is a local designation made by the Newton Historical Commission in order to preserve and protect buildings, structures, landscapes, and places which have been recognized to be architecturally and/or historically significant resources within the City.
- 
Mid 20th Century Housing Survey:
 Properties included in Newton's Mid-Twentieth Century Housing Survey have no formal designation. This survey is a subset of the City's Historic Resource Survey and lists neighborhoods developed between 1940 and 1960 that have architectural and historical associations with the City.
- 
Preservation Restrictions
 Preservation Restrictions are easements placed on properties held by the City of Newton to protect their historic character. They require review of proposed changes to the interior, exterior, and landscape depending upon the restriction. Preservation restrictions can be bought, sold, or donated and run for a set number of years of in perpetuity. When considering alterations, property owners should check with the Preservation Planner to review the specific terms of their restriction.
- 
Local Historic Districts
 This is a local designation to preserve the architectural and historic characteristics of the area.
- 
National Register Districts
 Districts listed in the National Register of Historic Places

The information on this map is from the Newton Geographic Information System (GIS). The City of Newton cannot guarantee the accuracy of this information. Each user of this map is responsible for determining its suitability for his or her intended purpose. City departments will not necessarily approve applications based solely on GIS data. Applicants for city permits must inquire of the relevant city department for applicable requirements. City staff correct errors as they are identified. Newton's GIS Administrator maintains records regarding the source materials and methods used to create the digital data and will disclose this information upon request.

