

# Newton: Planning and Development

Monthly Newsletter  
November 2025



Dear Newtonians,

Welcome to the Planning & Development Department's newly refreshed newsletter! We're updating our communications to make them easier to read and packed with the information that matters most. This monthly newsletter and future monthly newsletters will provide comprehensive updates from across the department, including:

- Department projects
- Transportation resources
- Housing resources
- Affordable Housing Spotlight with housing opportunities
- Updates on private development proposals and projects
- And so much more!

You may remember our weekly Friday Report, which as the name suggests, provided updates every Friday. This refreshed monthly newsletter will serve as a supplement to the Friday Report, which also got a refreshed look with a similar style. The new Friday Report will be concise, focusing just on week by week, upcoming meeting schedules, keeping you informed and prepared.

We hope you enjoy the new format and welcome your feedback as we continue improving how we communicate with the community. Thank you for staying engaged!

Don't forget to follow us on Instagram: [@CityofNewtonPlanning](#) and like us on Facebook: [Newton Planning and Development](#).

Sincerely,

*The Planning & Development Department*

---

## Department Projects and Updates

### Walk, Roll, and Bike Network Plan:

The Walk, Roll, and Bike Network Plan supports the City's vision of a transportation system that is safe, smart, accessible, livable

system that is safe, smart, accessible, livable and sustainable. The Plan's recommendations aim to:

- Connect people to key destinations
- Advance accessibility for all users
- Enhance safety and comfort
- Use resources efficiently

For more detailed information, [visit our website.](#)

## Newton Walk, Roll, and Bike Network Plan

City of Newton Planning and Development  
Department, Department of Public Works  
September 6, 2025



Click the image to take you to the Newton Walk, Roll, and Bike Network Plan

# Transportation Hub

## GoGo

GoGo provides subsidized rides for people living in Newton -- older adults, lower income individuals, and people with disabilities.

*Not yet registered?* Click [HERE](#) to register, or call Older Adult Services at **617-796-4646** to make an appointment to become a GoGo rider.

*Registered and ready to ride?* Call **1-855-605-8544** and either speak with an operator or use the automated selections to request a ride.

*How much does it cost?* The cost varies depending on your tier of service (Tier 1, Tier 2, or Tier 3). Regardless of tier, rides from anywhere in Newton to the Cooper Center are \$2! For more specific information on pricing, [visit our website.](#)



GoGo Newton flyer

## MBTA

The MBTA has a strong presence in Newton including...

Green line (Riverside) subway service with stops at: [Riverside](#), [Woodland](#), [Waban](#), [Eliot](#), [Newton Highlands](#), [Newton Centre](#), and [Chestnut Hill](#).

Commuter rail service along the Worcester/Framingham line with stops at: [Auburndale](#), [West Newton](#), and [Newtonville](#).

And many bus routes including the: [52](#), [57](#), [59](#), [60](#), [501](#), [504](#), [505](#), [553](#), [554](#), [556](#), and [558](#).

### Reduced Fares

- **Older Adults** (age 65+): Eligible for a Senior



## New! Expanded Eligibility for Reduced MBTA Fares

The MBTA is expanding access to reduced fares for income-eligible riders. Eligible riders will gain access to half-off regular fares on Commuter Rail, Subway, Bus, Ferry, and The RIDE.

To learn more, visit:  
[MBTA.com/income-eligible](https://www.mbta.com/income-eligible)



MBTA Expanded Eligibility for Reduced MBTA Fares flyer

- **Older Adults** (age 65+): Eligible for a Senior CharlieCard. [Apply online](#) or at the [Charlie Service Center in Boston](#).
- **Student CharlieCard**: All middle and high school NPS students are eligible for a reduced fare S-card. Cards are available at the main office of all Newton public middle and high schools.
- **Income-Eligible** (age 18-64): Available to riders who are enrolled in an approved state assistance program. [Apply online](#), at the [Charlie Service Center in Boston](#), or at a [partner location](#).
- **People with Disabilities or Medicare Cardholders**: May qualify for Transportation Access Pass (TAP). [Apply online](#), at the [Charlie Service Center in Boston](#), or by mail.

\*The MBTA is free for children 11 years and younger, military personnel, and people who are legally blind.

### The RIDE:

Provides door-to-door, shared-ride public transportation to people who can't use the subway, bus, or trolley due to temporary or permanent disability.

**All NPS students get discounted MBTA fares!**

- 50% off single rides
- 70% off monthly & weekly passes

Single rides: \$1.70 \$0.85 bus \$2.70 \$1.10 subway	Passes (valid on bus & subway, 24/7): \$22.50 \$10 7-day pass \$90 \$30 30-day pass
------------------------------------------------------------	-------------------------------------------------------------------------------------------

Get a student CharlieCard in your main office.

There is no cost to obtain a card.

More info:  
[mbta.com/fares/reduced](http://mbta.com/fares/reduced)

*Newton Public Schools MBTA flyer made by Planning Interns*

## Bluebikes

Bluebikes, the Boston region's public bike-share system, includes **15 stations across Newton**. Bluebike stations will remain **OPEN throughout this winter**, with continued access. Riding is easy:

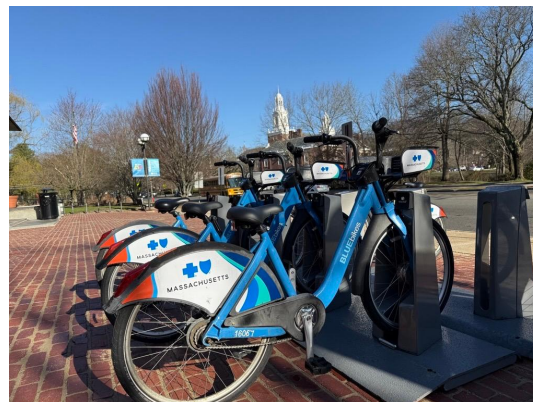
1. [Download the Bluebikes app](#) (or purchase a pass online)
2. Unlock a bike at any station
3. Ride
4. Return your bike to any station in the 13-municipality system when you're done.

**Where are they?** [Click to view the network of Bluebikes' station locations](#), or check the live map in the Bluebikes app for bike and dock availability in real time.

**Affordable Options:** Bluebikes offers a discounted program for income-eligible riders, [including \\$5 monthly memberships and reduced per-ride costs](#).

**Recent Updates:** The [Newton Highlands station](#) on Station Ave. has been recently reinstalled after it was removed for road repaving work.

*Would you like to see more Bluebikes stations? Let us know where you think they should go by [filling out this brief survey](#).*



*City Hall Bluebikes station*



## Micro-mobility

Micro-mobility is another useful tool for getting from one place to another using alternative modes of transportation (i.e. bike).

It is important to understand the rules and safest practices when using alternative modes of transit. Some things to keep in mind are to:

1. Always wear a helmet
2. Stay visible
3. Ride on the right side of the road, obeying traffic signs/signals
4. Alert others of your presence
5. Signal for turns/stops
6. Don't wear headphones
7. Don't weave in and out of traffic
8. Maintain your device
9. Understand permitted riding areas, traveling at appropriate speeds



MassDOT flyer on how to have a safe micromobility experience

---

# Housing Spotlight: Affordable Housing Opportunities in Newton

Chase Street Apartments - [APPLICATION](#) (email to [kriscosta@laassoc.com](mailto:kriscosta@laassoc.com) once completed)

Description: L.A. Associates is accepting applications for one 3 bedroom, 2 bathroom apartment.

Location: 47-49 Chase St, Newton Centre

Contact info: Kristen Costa | [kriscosta@laassoc.com](mailto:kriscosta@laassoc.com) | 617-244-7781

[Click for more information](#)

This newsletter will be updated regularly with information about waitlists and availability for affordable housing opportunities. [Click HERE](#) to sign up for the Affordable Housing Availability Newsletter. For any questions, contact **Malcolm Lucas** at 617-796-1149 or [mlucas@newtonma.gov](mailto:mlucas@newtonma.gov).

[Click for a full list of Affordable Housing Opportunities](#)

---

## Housing Resources

### [SEB Housing](#)

Database of affordable housing opportunities for rental and purchase

### General Housing Assistance

- [Self guided eviction help](#)
- [The MA Attorney General's Guide to Landlord and Tenant](#)

### [CHAMP](#)

The Common Housing Application for Massachusetts Programs (CHAMP). Apply for

- [Rights](#)
- [Mass Legal Help](#)
- [Eviction Legal Services and Mediation](#)
- [Horace Industrial Cousins Fund](#)
- [Residential Assistance to Families in Transition \(RAFT\)](#)
- [Consumer Financial Protection Bureau \(CFPB\)](#)

state-aided public housing and state-funded rental vouchers.

### [MyMassHome](#)

The official online listing and search tool for accessible and affordable *homeownership* opportunities in Massachusetts

### [Newton Housing Authority](#)

Provides housing assistance to low-income residents, and owns and manages units throughout the city.

### [Housing Navigator MA](#)

The official online listing and search tool for accessible and affordable *rental*/homes in Massachusetts

[Click for more Housing Resources](#)

## Recent Development Proposals



Aerial rendering of potential Riverside project

**Address:** 335 Grove St and 399 Grove St, Auburndale (MBTA Riverside T Station)

**Description:** Develop a portion of an existing parking lot for mixed use including 753 units

**Status:** Special Permit application filed

**Next hearing:** 11/18

[Link to Permit Application](#)

[Land Use Committee Agenda Link](#)



Street view rendering of potential Dudley Rd project

**Address:** 85 Dudley Rd, Newton Centre

**Description:** 70 units in 26 townhouse style buildings

**Status:** Special Permit application filed

**Next hearing:** Tentatively scheduled 12/2

[Link to Permit Application](#)

[Land Use Committee Agenda Link](#)

*Please note, this list is intended for informational sharing purposes only. The planning department does*

*not endorse any private project.*

Comprehensive List of Development Projects

**Sign Up for Mayor Fuller's Email Updates:** Looking for the latest news about happenings at City Hall and around Newton? Sign up [HERE](#) to receive Mayor Ruthanne Fuller's Email Updates. To see archived editions of the Mayor's Email Updates, visit the City of Newton website at [www.newtonma.gov](http://www.newtonma.gov).



City of Newton - Planning & Development  
[newtonma.gov/planning](http://newtonma.gov/planning)



City of Newton | 1000 Commonwealth Avenue | Newton, MA 02459 US

[Unsubscribe](#) | [Update Profile](#) | [Constant Contact Data Notice](#)



Try email & social marketing for free!