

**REVISED PLANTING SCHEMATIC FOR ENHANCEMENT PLANTING AREA
11 PARSONS STREET, NEWTON**

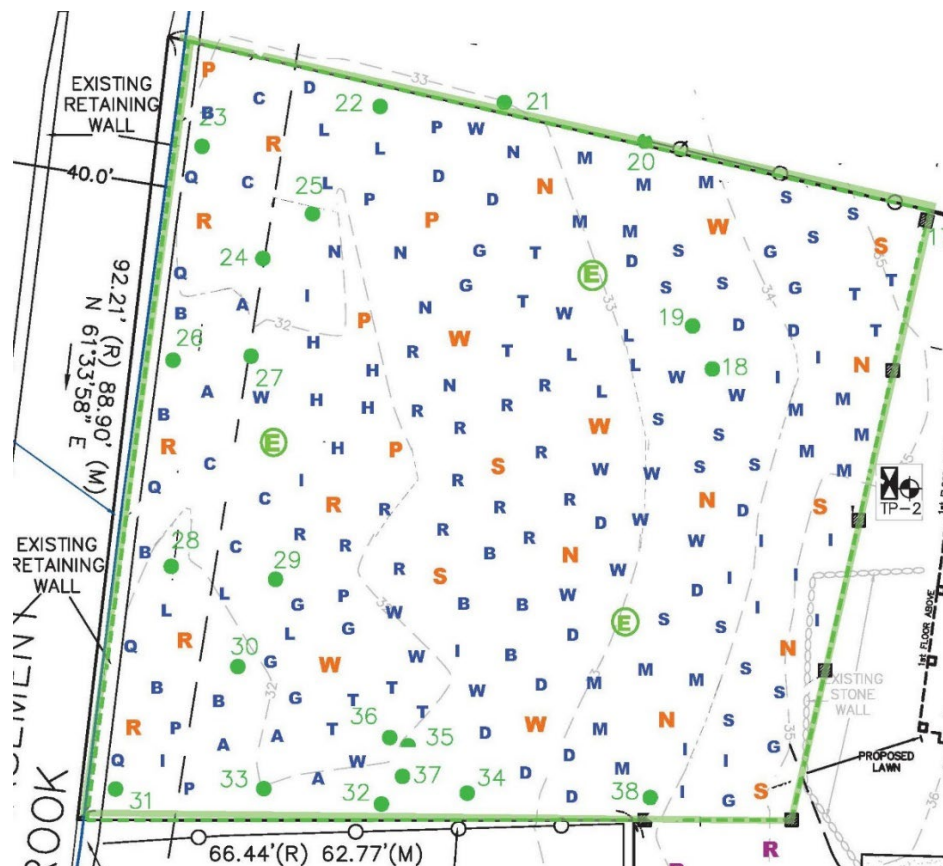
PREPARED BY ECOTEC, INC.
MARCH 13, 2025; REVISED NOVEMBER 25, 2025
(Edits shown with purple text)

Enhancement Planting Area (6,500± S.F.)

Stratum; Species; Size; Spacing		
Deciduous Canopy Saplings; 15' on-center		26/78"/142"/14" *
N	Northern Red Oak (<i>Quercus rubra</i> ; 3" Caliper)	6
W	White Oak (<i>Quercus alba</i> ; 3" Caliper)	5
P	Pin Oak (<i>Quercus palustris</i> ; 3" Caliper)	4
R	Red Maple (<i>Acer rubrum</i> ; 3" Caliper)	6
S	Sugar Maple (<i>Acer saccharum</i> ; 3" Caliper)	5
Evergreen Canopy Saplings		3/15"/0"/0"
E	Eastern White Pine (<i>Pinus strobus</i> ; 8-10' Tall; 5" Caliper)	3
Shrubs (Evergreen and Deciduous); 3.5-5' height; 6.5' on-center		160
M	Mountain Laurel (<i>Kalmia latifolia</i>)	15
I	Inkberry (<i>Ilex glabra</i>)	15
S	Serviceberry (<i>Amelanchier canadensis</i>)	15
W	American Witch-hazel (<i>Hamamelis virginiana</i>)	15
D	Gray Dogwood (<i>Cornus racemosa</i>)	15
R	Red-osier Dogwood (<i>Cornus sericea</i>)	15
B	Bayberry (<i>Morella pensylvanica</i>)	10
G	Groundseltree (<i>Baccharis halimifolia</i>)	10
T	American Cranberry Bush (<i>Viburnum trilobum</i>)	10
L	Nannyberry (<i>Viburnum lentago</i>)	10
N	Withe-rod (<i>Viburnum nudum</i>)	5
A	Silky Dogwood (<i>Cornus amomum</i>)	5
C	Common Winterberry (<i>Ilex verticillata</i>)	5
P	Sweet Pepper-bush (<i>Clethra alnifolia</i>)	5
H	Highbush Blueberry (<i>Vaccinium corymbosum</i>)	5
Q	Speckled Alder (<i>Alnus incana</i>)	5

* Sapling number provided / sapling inches provided / Tree Ordinance mitigation required / Commission Guidance mitigation required

- The proposed Enhancement Planting Area includes 17 existing on-site trees including northern red oak, red maple, sugar maple, Norway maple, and hawthorn. Given the Tree Ordinance and Tree Warden's current lack of consideration for the removal of invasive trees, the Norway maples must be retained to avoid unnecessary mitigation. The Norway maples may be thinned under the direct supervision of a certified arborist. These peripheral trees will shade the area and provide a benefit for the enhancement area.
- The understory in this peripheral area includes Norway maple saplings and shrubs; oriental bitter-sweet vines; and winged euonymus, honeysuckle, and forsythia shrubs. These will be cut and blotted with an appropriate herbicide in the early fall by a licensed herbicide applicator for the life of the permit.
- * Two trees (rather than the five under the approved plan; Trees 41 and 43 will be removed; Trees 9, 12, and 13 will be retained) are proposed to be removed; both are subject to wetlands jurisdiction. One of these trees is a 28" canopy species which requires 42" of replacement with canopy species under the Tree Ordinance and 14" under the Commission Guidance; the second tree is an ornamental which is not covered by the Tree Ordinance but is protected under the Commission Guidance requiring 4" of replacement. Mitigation for the canopy trees will be provided in the Enhancement Planting Area (see above table); mitigation for the ornamental will be provided in the western and southeastern portions of the site as shown on the Proposed Ornamental Plantings on the next page. The species, number, and sizes of the proposed plantings have not been changed from the approved plan; as such, excess tree mitigation is proposed.
- Small shrubs are subject to severe browsing and many do not survive; as such, this plan provides for larger, more robust shrubs to aid in survival.
- Substitutions are subject to the advance approval by Conservation Staff. Plants must be natives; cultivars and varieties will not be accepted.
- All excess soil must be removed and disposed of off-site.
- After planting, the Enhancement Planting Area will be mulched with a 2 to 3" thick layer of a 4:1 mixture of decomposed leaf compost and natural colored bark mulch.
- After planting the plants must be watered in well and watered periodically until they are established.



Note: This plan section is from the approved plan; no changes to the mitigation area boundary or proposed plantings are proposed in this area. The locations of the individual saplings and shrubs are shown for permitting and review purposes; the locations of the plantings in the field will be based on this plan subject to the discretion of the qualified wetland scientist. The planting area will be monitored annually for two years after it is established. A brief report will be provided to the Commission in a timely manner after each annual inspection. A Request for a Certificate of Compliance will be made following the second annual inspection.

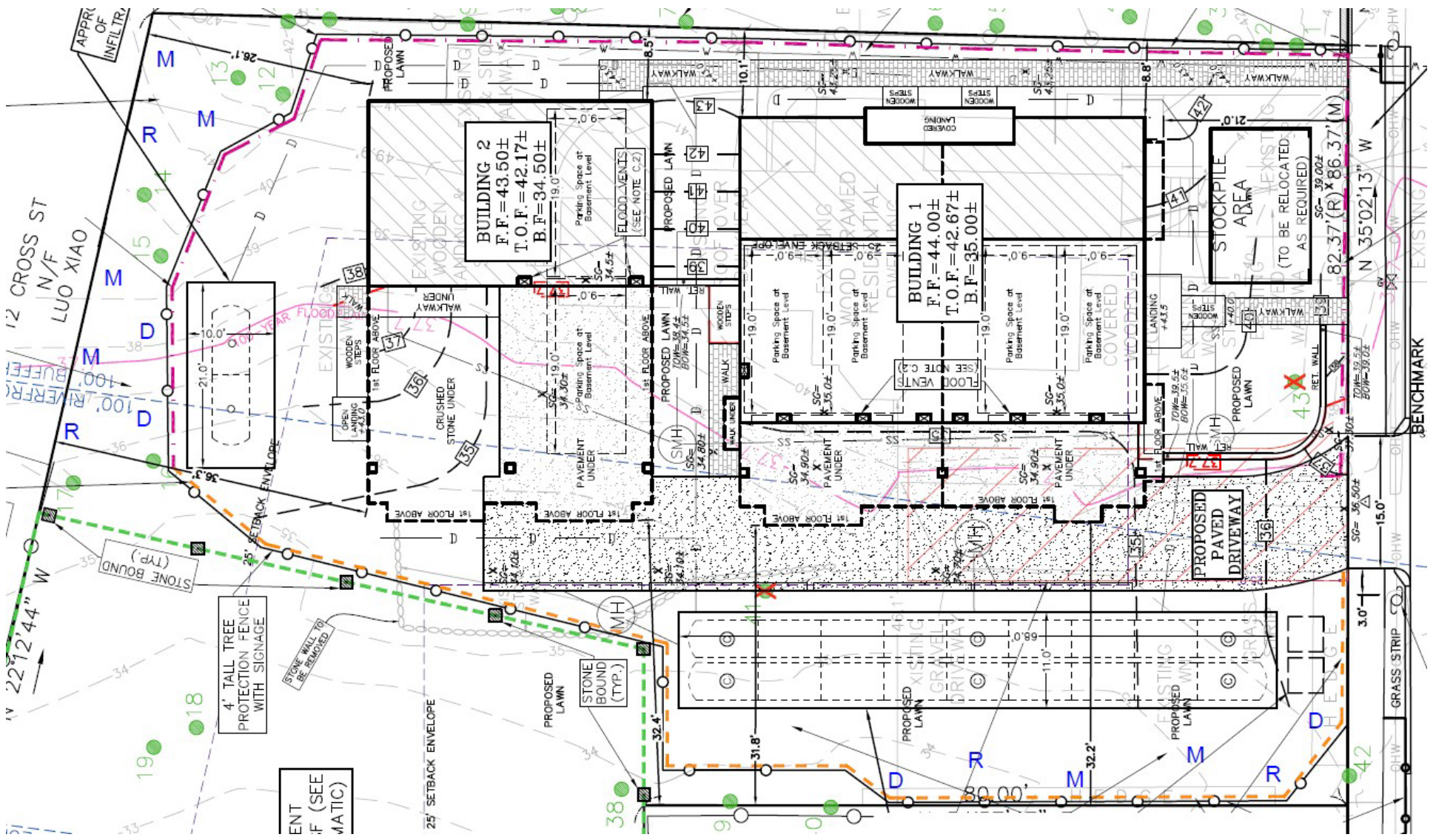
**REVISED PROPOSED ORNAMENTAL PLANTINGS
11 PARSONS STREET, NEWTON**

PREPARED BY ECOTEC, INC.
MARCH 13, 2025; REVISED NOVEMBER 25, 2025

Stratum; Species; Size; Spacing	
Deciduous Ornamental Saplings	14/28"/0"/4"
M Sweetbay Magnolia (<i>Magnolia virginiana</i> ; 2" Caliper)	6
D Flowering Dogwood (<i>Cornus florida</i> ; 2" Caliper)	4
R Eastern Redbud (<i>Cercis canadensis</i> ; 2" Caliper)	4

* Sapling number provided / sapling inches provided / Tree Ordinance mitigation required / Commission Guidance mitigation required

- Substitutions are subject to the advance approval by Conservation Staff. Plants must be natives; cultivars and varieties will not be accepted.
- All excess soil must be removed and disposed of off-site.
- The ornamental planting area has been split to enhance vegetation screening in the western portion of the site and retain some open lawn area for the use of the occupants in the southeastern portion of the site; no plantings are proposed between Building 1 and Parsons Street.
- After planting, the area at each planted sapling will be mulched with a 2 to 3" thick layer of a 4:1 mixture of decomposed leaf compost and natural colored bark mulch. The mulch must be kept away from the stem and a 'mulch volcano' must not occur at these saplings.
- After planting the plants must be watered in well and watered periodically until they are established.



Note: The locations of the individual saplings are shown for permitting and review purposes; the locations of the plantings in the field will be based on this plan subject to the discretion of the qualified wetland scientist. The planting area will be monitored annually for two years after it is established. A brief report will be provided to the Commission in a timely manner after each annual inspection. A Request for a Certificate of Compliance will be made following the second annual inspection.