



Parks and Open Space Office

Luis Perez Demorizi-Director
lpdemorizi@newtonma.gov

Ahron Lerman- Asst. Director
alerman@newtonma.gov



617-796-1500



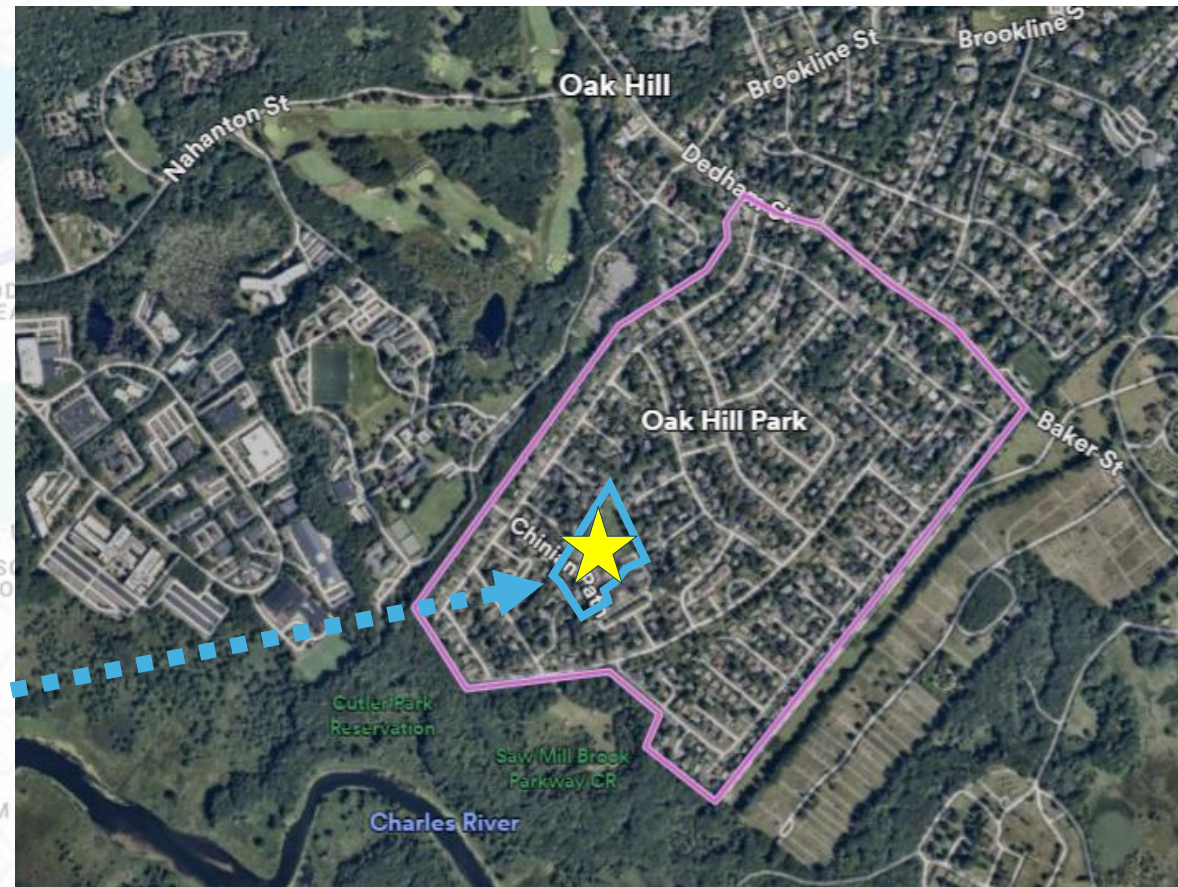
Park

Final Court Layout Discussion
June 26, 2025



Newton, MA

Oak Hill Park neighborhood



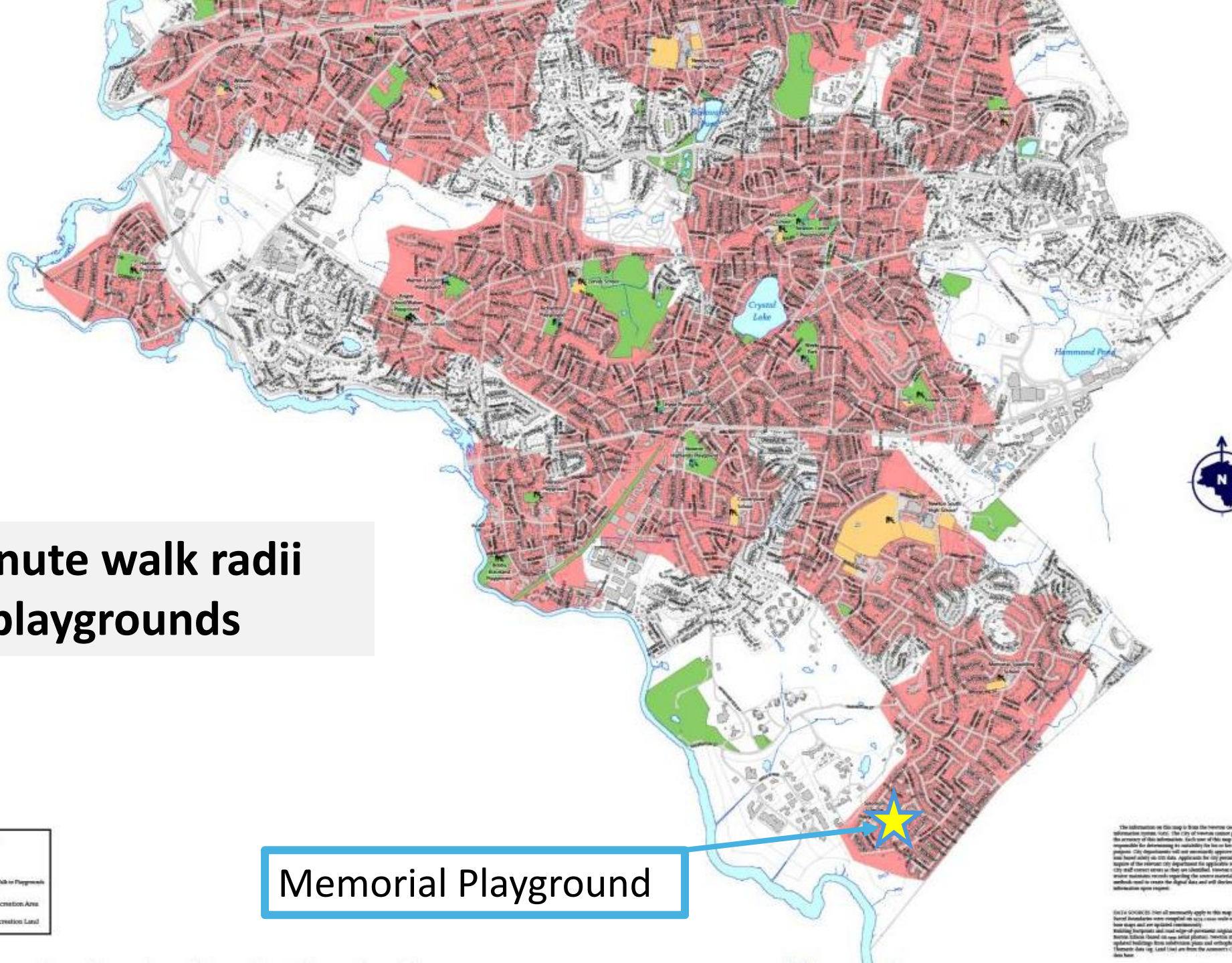


Existing Park Usage

- 3.0 acres overall
- Open lawn/sports field (~2 acres)
- Playground (~0.5 acres)
- Tennis courts (~0.3 acres)
- Perimeter tree plantings
- Centrally-located in residential neighborhood w/connections to multiple pedestrian paths
- Abutting Solomon Schechter Day School



15-minute walk radii from playgrounds

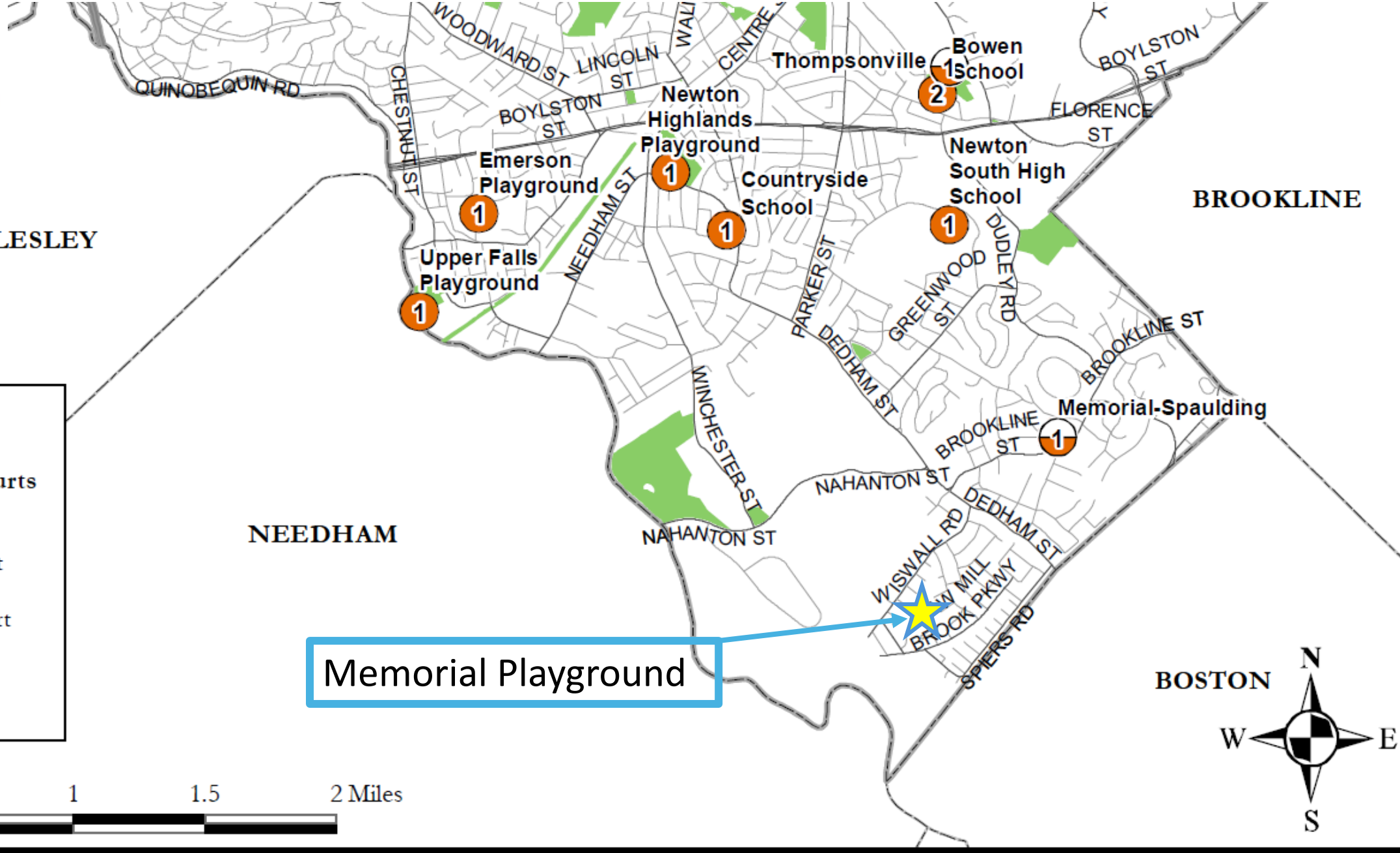


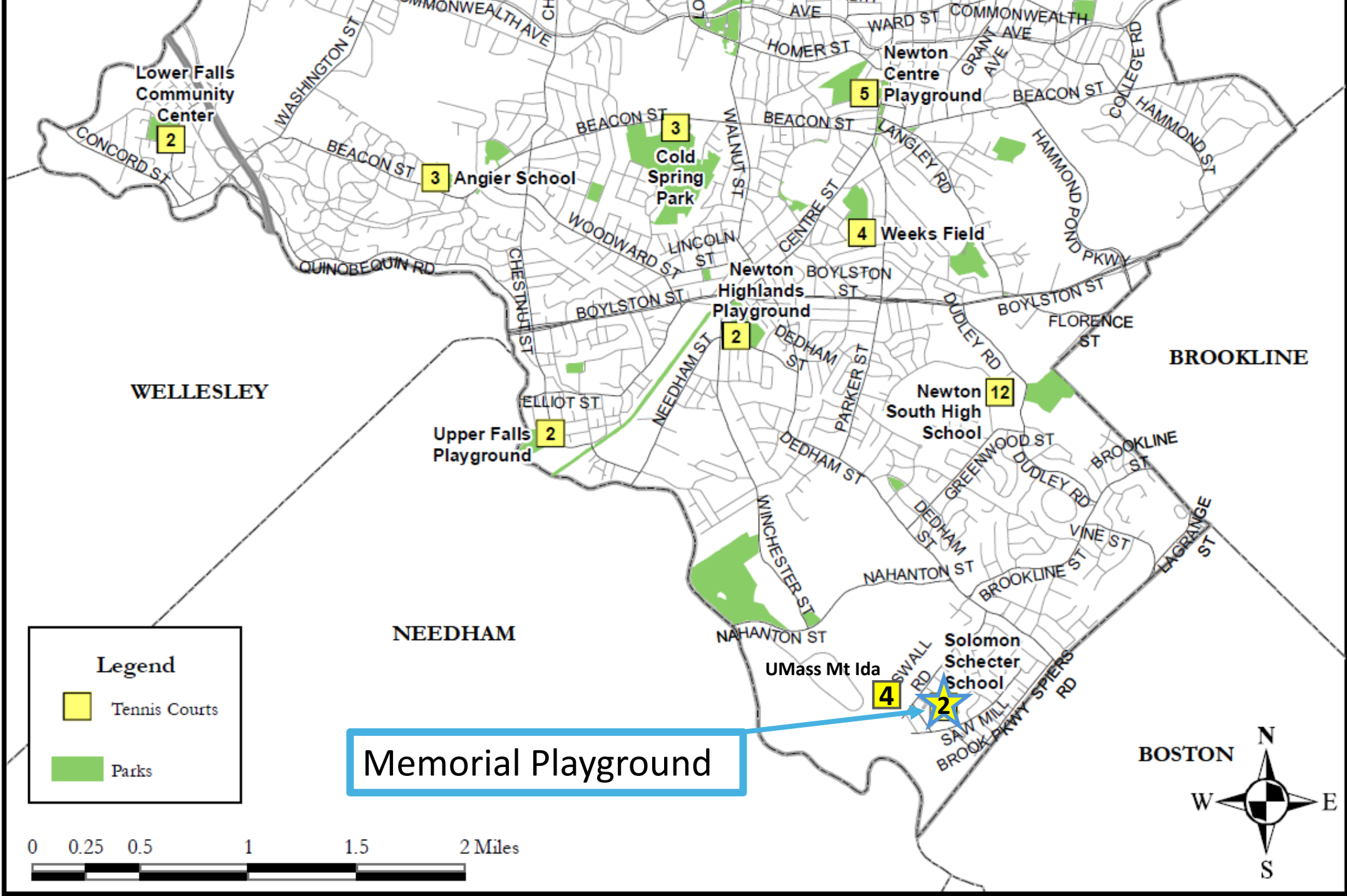
Memorial Playground

Playground
 Wet Line
 15 Minute Walk to Playgrounds
 Park or Recreation Area
 School Recreation Land

The information on this map is from the historic cartographic information system (GIS). The City of Seattle cannot guarantee the accuracy of this information. Each user of this map is responsible for determining its suitability for his or her intended purpose. City Departments will not necessarily approve official use based solely on GIS data. Approvals for city permits and license of the information are required for applicable requirements. City staff cannot verify or they are identified. However, city address and maintenance records regarding the same materials and methods used to create the digital data and will receive the information upon request.

DISCLAIMER: This disclaimer applies to this map. Based on data from various sources, including aerial photography, base maps, and other geographic information. Building footprints and road edge of pavement originally from Source: Esri/Mapbox (based on open street photos). Historic staff have updated buildings from information, photos and orthorectified. Terrain data (e.g. LIDAR) are from the nearest available data base.





Court Options

A) Keep Tennis

- 1) W/full basketball court
- 2) W/two half basketball courts

B) No Tennis

- 1) Two Basketball courts
- 2) One full basketball court + “hybrid space”



A1) Full Court Tennis + *Modified Full-Court Basketball*

Pros

- Two full-court sports
- Adequate run-out zones
- Reduced fencing (from full tennis)

Cons

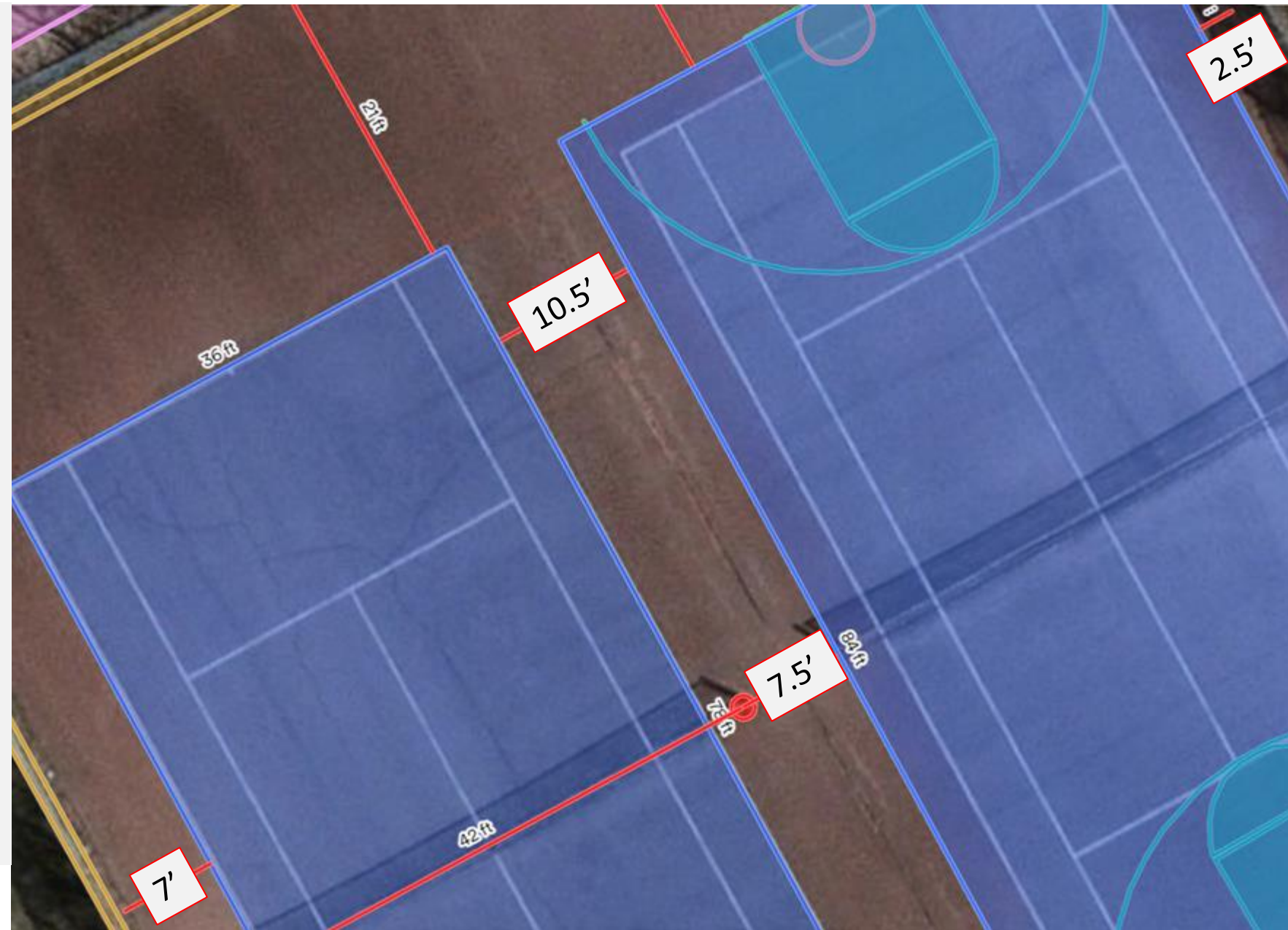
- Shared run-out zone between two courts
- Difficult to use both courts simultaneously?



A1) Full Court Tennis + *Modified Full-Court* Basketball

Details

- Full 3-point line
- Narrowed sidelines
- **10.5'** shared run-out between court sidelines
- **7.5'** from bball to tennis net post
- **2.5'** from bball sideline to edge of pavement



A2) Full Court Tennis + Half-Court Basketball

Pros

- Full tennis court
- Adequate run-out zones
- Reduced fencing—saves \$

Cons

- No full-court basketball
- Unpopular



B1) Two basketball courts

Pros

- Two full-court basketball
- Adequate run-out zones
- No external fencing needed
- Continuous paved area between hoops provides flexible recreational space for triking, jump rope etc.

Cons

- Loss of tennis
- Additional cost for more hoops



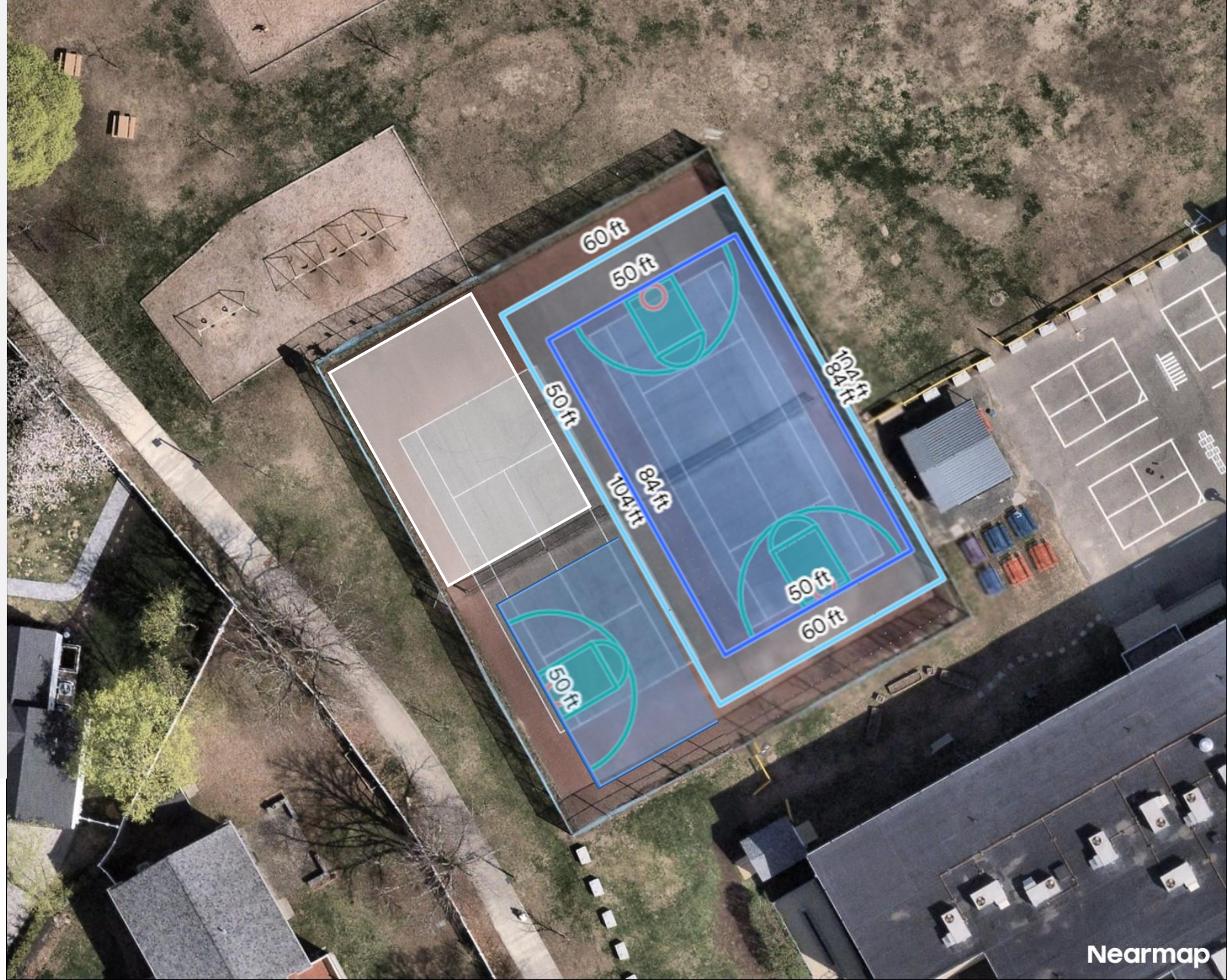
B2) Basketball court + “Hybrid Space”

Pros

- Full-court basketball
- Adequate run-out zones
- No external fencing
- Added flexible space for additional picnic tables or painted pavement games
- 8-ft hoop half court provides opportunities for younger children

Cons

- Loss of tennis





Memorial Playground at Oak Hill Park



Parks & Open Space Office

Luis Perez Demorizi lpdemorizi@newtonma.gov

Ahron Lerman alerman@newtonma.gov

General Parks: parks@newtonma.gov

617-796-1500