

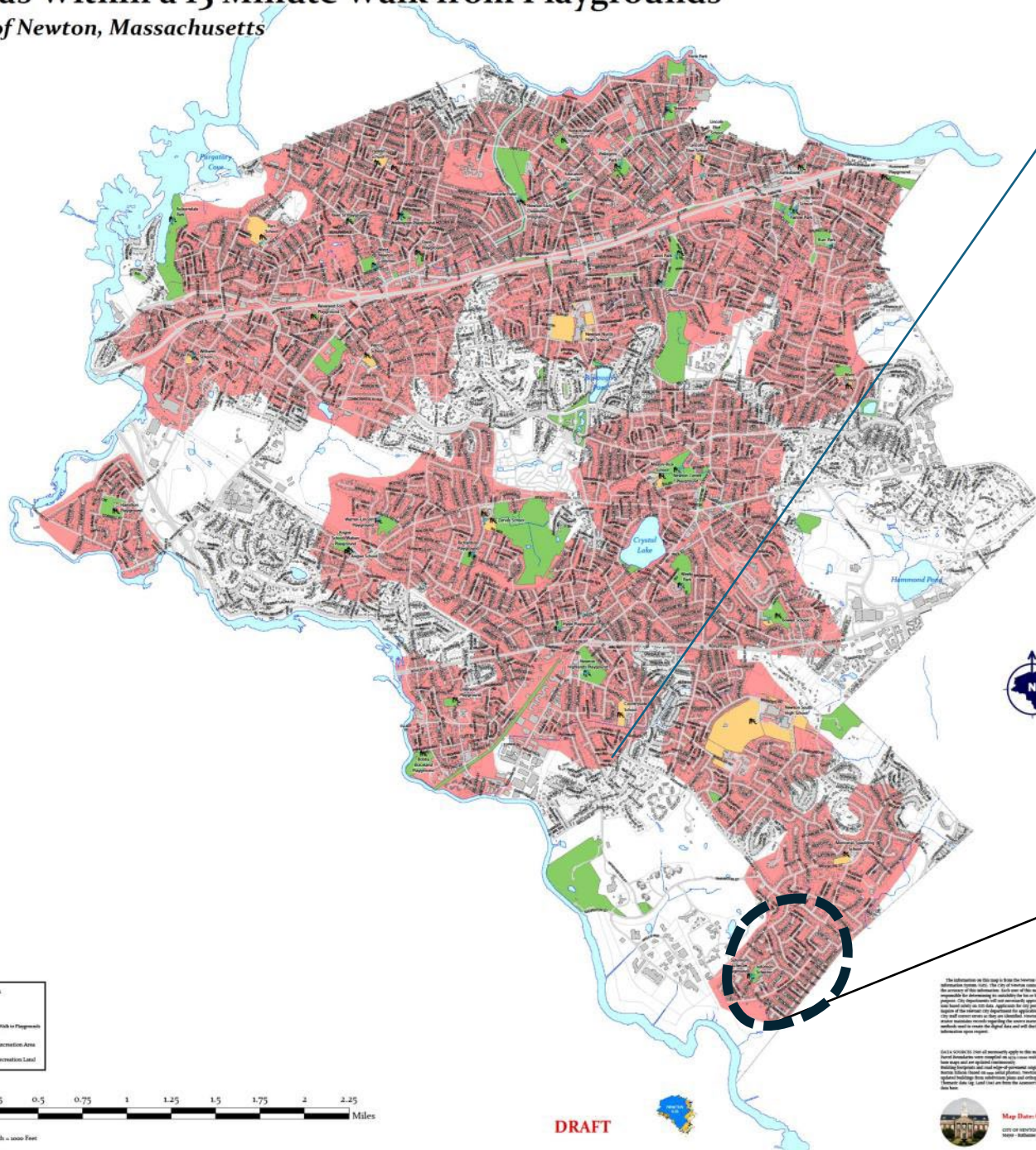
Memorial Playground at Oak Hill Park:

Beginning Improvements



Areas Within a 15 Minute Walk from Playgrounds

City of Newton, Massachusetts



The information is the accuracy or responsible for purpose. City is time based and measure of the City staff come structure maintain methods used information of

DATA SOURCE Parcel Boundaries Base maps and Building Footprints Newton GIS

The information on this map is based on the best available geographic information system data. The City of Newton reserves the right to update this information without notice. The City of Newton is not responsible for any errors or omissions. The City of Newton is not responsible for any damages or losses resulting from the use of this information. The City of Newton is not responsible for any damages or losses resulting from the use of this information.

This is a draft map. It is not intended for use as a legal document. It is not intended for use as a legal document. It is not intended for use as a legal document.

Map Date: October 24, 2023
City of Newton, Massachusetts
Parks, Recreation & Culture

- Playground
- Water
- 15 Minute Walk to Playground
- Park or Recreation Area
- School Recreation Land

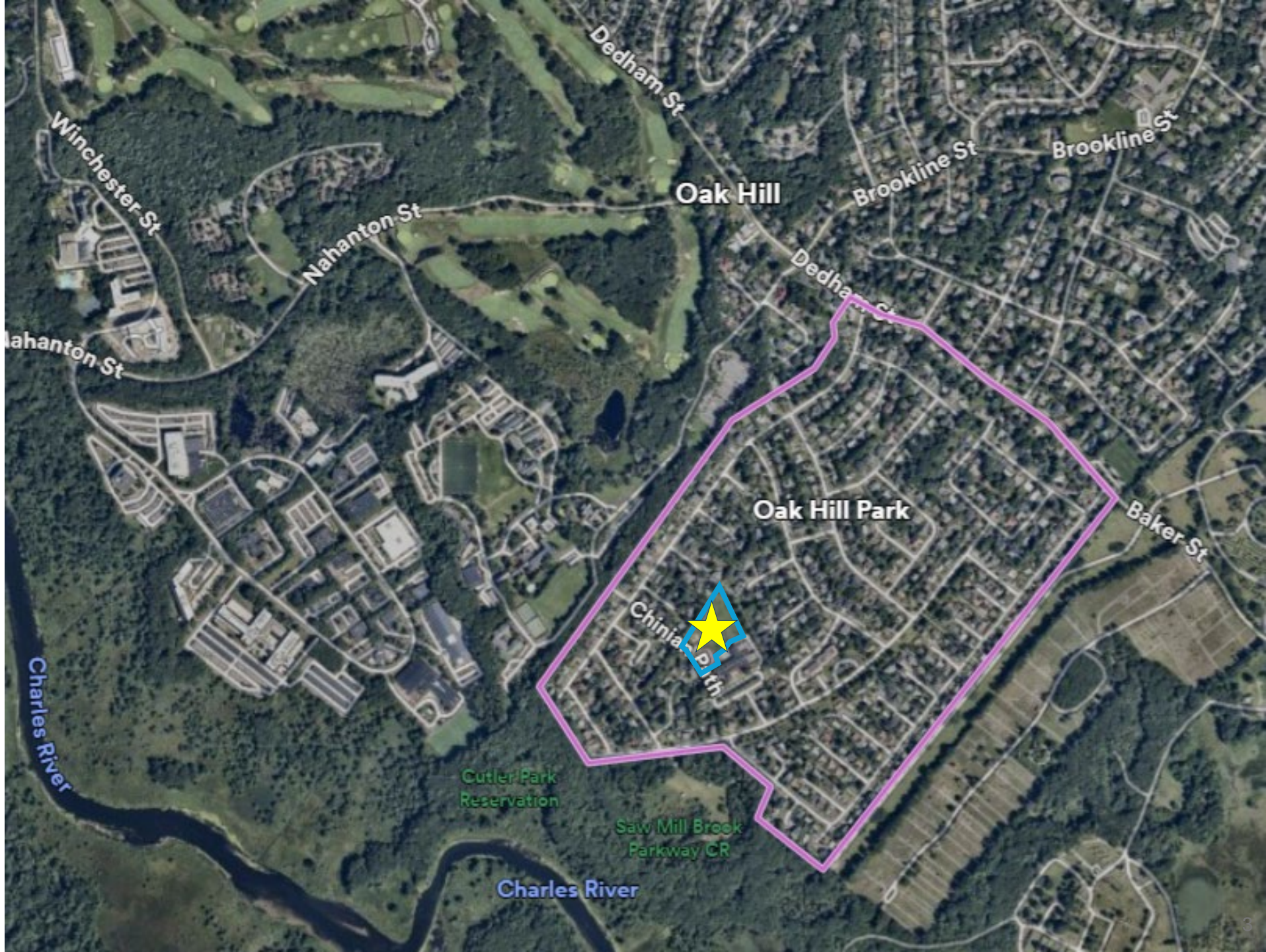


DRAFT





589 letters to
abutters in Oak
Hill Park
neighborhood



What We've Heard

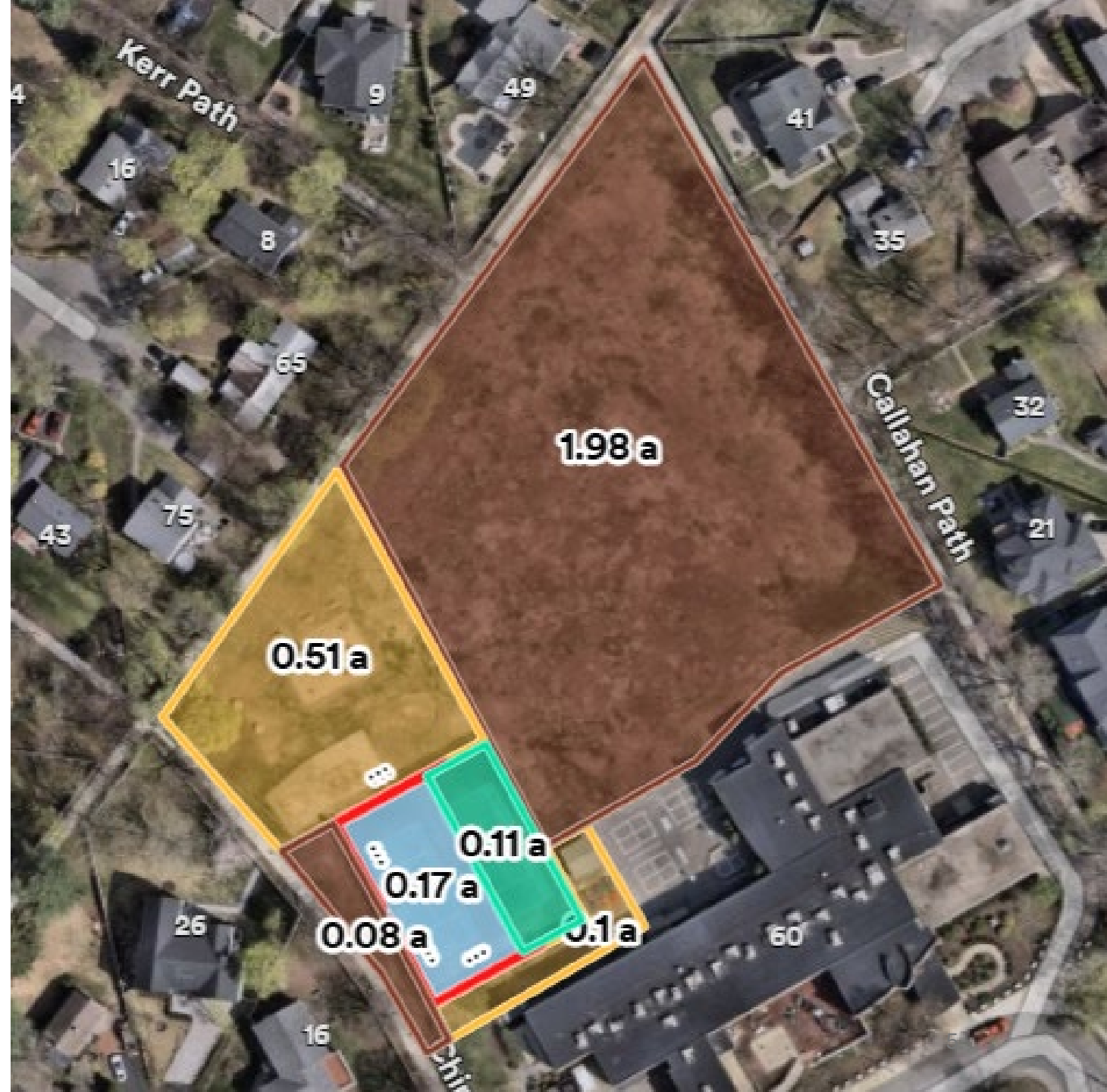
1. Ensure equitable access to facilities
2. Clarify school/park relationship
3. Provide spaces for multiple age groups
4. Improve quality of field
5. Off-Leash dog space
6. Replace play equipment
7. Diversify recreational offerings

\$225k budget



Existing Park Usage

- **3.0 acres overall**
- Open lawn/sports field (~2 acres)
- Playground (~0.5 acres)
- Tennis courts (~0.3 acres)
- Perimeter tree plantings
- Centrally-located in residential neighborhood w/connections to multiple pedestrian paths
- Abutting Solomon Schechter Day School



More About “Phasing”

Different contractors

+

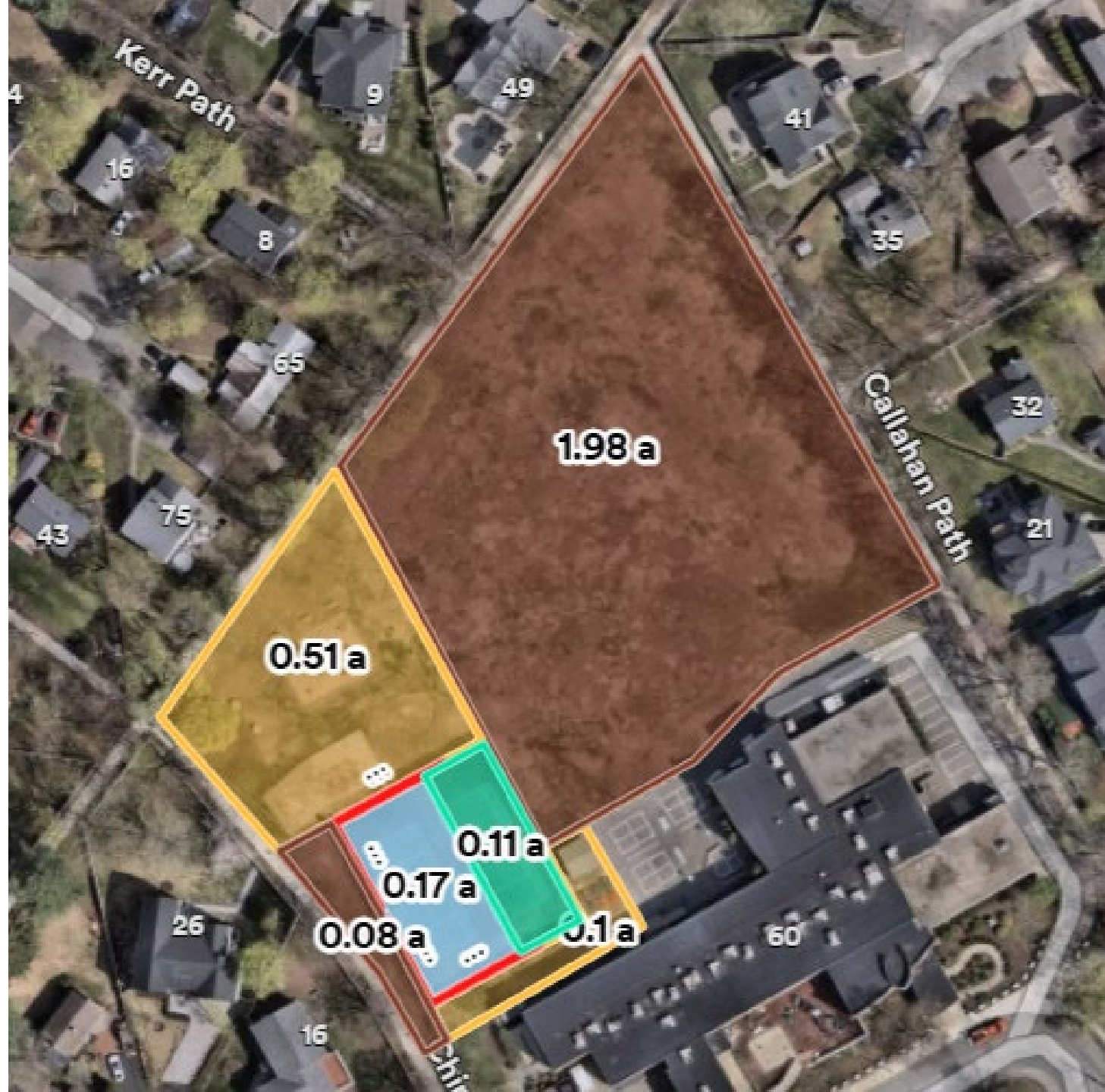
Different vendors

+

Different lead times for
manufacturing & shipping

=

**Different timelines for court,
fencing, and playground work**



Proposed Court and Fence Layout

- One regulation tennis court: **120' x 60'**
- Two half-court basketball courts: **56' x 40'**
- Perimeter fence partially removed to increase connectivity



Proposed Court and Fence Layout

- Total quoted cost: **\$97k**
- *Reduced* from \$113k in previous versions—less fencing and fewer gates.
- In ongoing conversations with Solomon Schechter to maintain security, clarify uses.



Proposed Playground



- 1.** Main play area replacement
- 2.** Swings: replace belts and edging, replenish woodchips
- 3.** Community fundraising for additional play equipment?



1

Main Structure Replacement

Main structure replacement

a. Two Tower with Bridge
(replacement/upgrade to
“Lhotse w/roof”) (~\$35k)

b. Garden Seesaw (~\$7k)

**Expected Installation Cost:
~\$80-\$85k**



Two Tower with Bridge

PCM213031

KOMPAN[®]
Let's play



Elevated activities 6	Accessible elevated activities	Accessible ground level activities	Accessible ground level play types
Present	6	2	2
Required	3	2	2

Two Tower with Bridge

PCM213031

KOMPAN
Let's play



Curved slide

Physical: sliding develops spatial awareness and a sense of balance. Furthermore, the core muscles are trained when sitting upright going down. **Social-Emotional:** empathy stimulated by turn-taking. **Cognitive:** young children develop their understanding of space, speed and distances when sliding down quickly.



Hammock

Physical: coordination and sense of balance when swaying. **Social-Emotional:** meeting, pushing friends gently back and forth, turn-taking. **Cognitive:** for toddlers cause and effect understanding.



Accessible stairway

Physical: climbing the accessible stairway is for all and supports cross coordination as well as arm and leg muscles. For young children, walking stairs and alternating feet is developed. **Social-Emotional:** room for active breaks and adult helpers. An inclusive space.



Tic-tac-toe panel

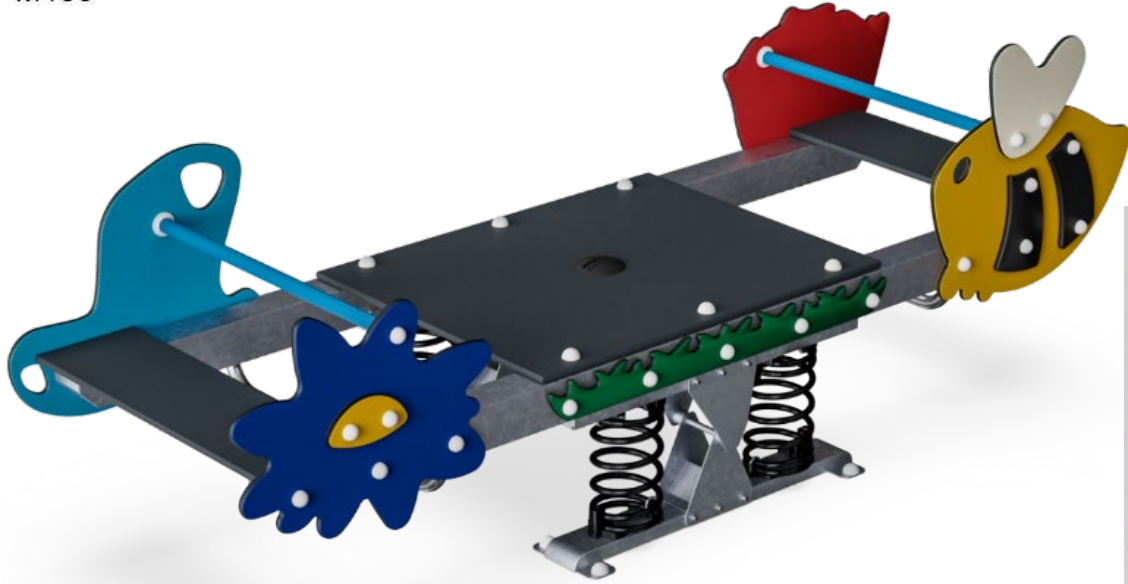
Social-Emotional: stimulates communication and turn-taking skills. **Cognitive:** support rules understanding, strategic thinking. **Creative:** leaving marks when tumblers are left in new positions.

Jacob's ladder

Physical: cross coordination and spatial awareness as well as upper body muscles when hanging with arms. This is especially important due to the sedentary lifestyles of today's children. **Social-Emotional:** turn-taking and cooperation. **Cognitive:** logical thinking when going from 2nd to 3rd step, changing feet.

Garden Seesaw

M186



Item no. M18601-01P

General Product Information

Dimensions LxWxH	3'7"x10'9"x3'7"
Age group	2 - 12
Play capacity (users)	10
Color options	



Main structure area replacement

Two Tower with Bridge & Garden Seesaw: ~\$85k

New Belts on Swings: ~\$4k

Tennis and half-court basketball courts: ~\$70k

Partial perimeter fence: ~\$27k

Subtotal = \$186k

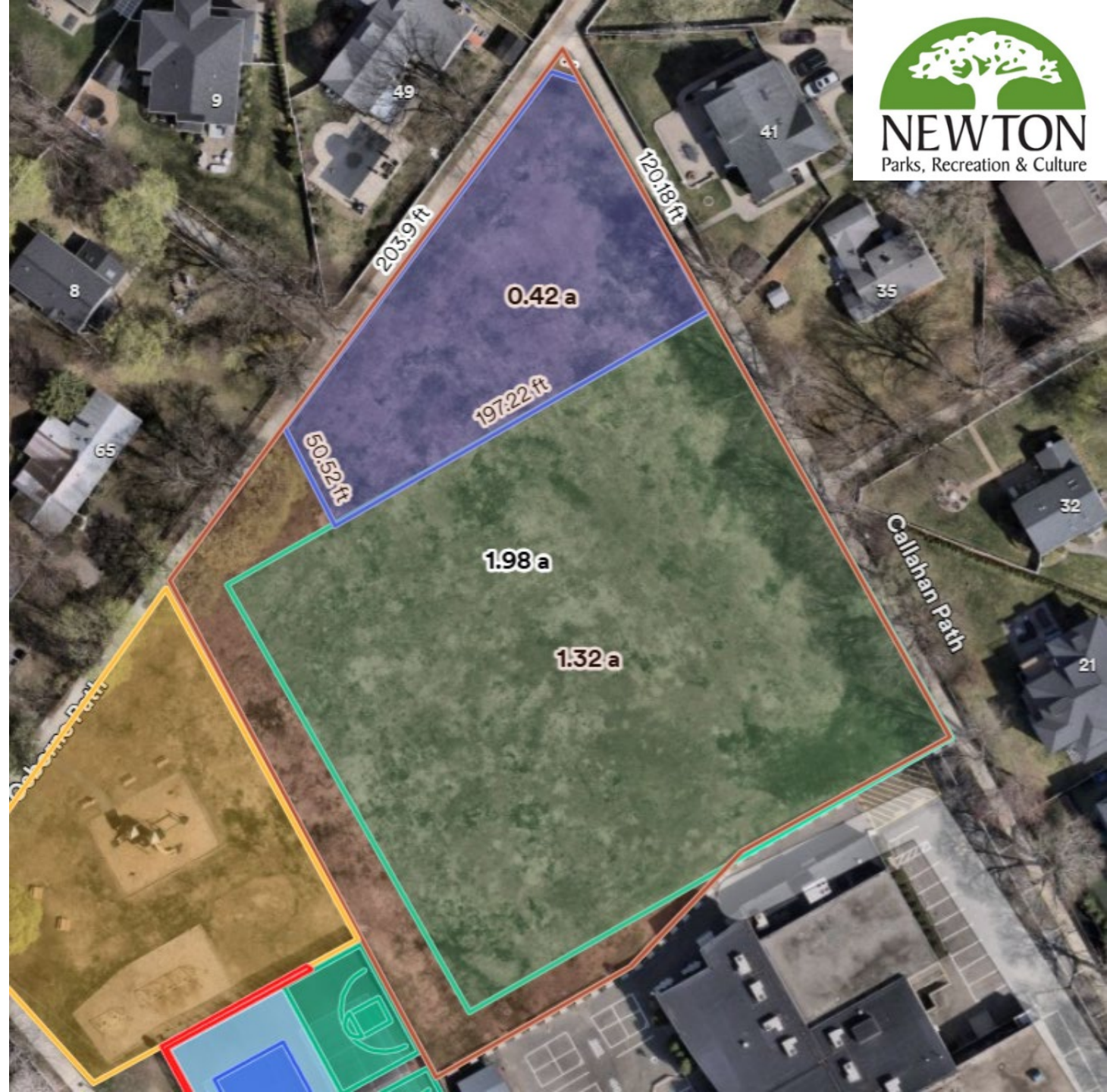
Contingency: ~\$37k

Estimated Total: \$223k



Off-Leash Area Proposal

- **Local resident-led campaign**
- **0.42 acres** (larger than Cabot, smaller than Walker dog parks)
- Remaining field space greater than three times off-leash area
- Farthest area from school and playground—contains location of old baseball backstop



Summary Proposals

- New playground equipment
- Fix court surfacing
- Add basketball hoops
- More open access to court
- New off-leash dog area
- Preserve field space





Memorial Playground at Oak Hill Park



Parks & Open Space Office

Luis Perez Demorizi lpdemorizi@newtonma.gov

Ahron Lerman alerman@newtonma.gov

General Parks: parks@newtonma.gov

617-796-1500