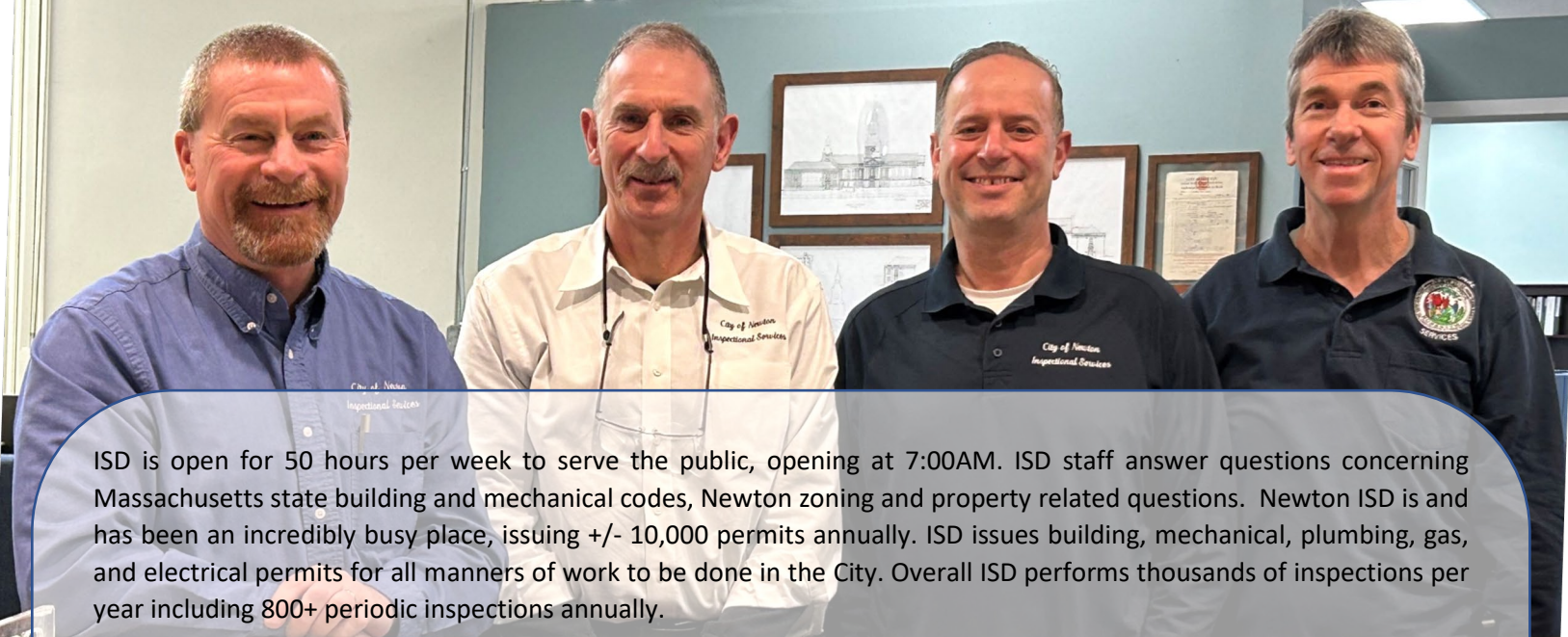


# Inspectional Services Department

## Mission

*The Inspectional Services Department is committed to ensuring the safety, integrity, and compliance of buildings and properties within our city of approximately 89,000 residents. We provide thorough building, periodic, mechanical, and zoning inspections while offering valuable information and guidance on zoning, permitting, and property regulations. Our department serves residents, contractors, developers, property owners, architects, engineers, and business owners by facilitating access to essential property and zoning data. Additionally, we support new businesses in finding suitable locations that align with the city's zoning bylaws, fostering a safe and well-planned community.*



ISD is open for 50 hours per week to serve the public, opening at 7:00AM. ISD staff answer questions concerning Massachusetts state building and mechanical codes, Newton zoning and property related questions. Newton ISD is and has been an incredibly busy place, issuing +/- 10,000 permits annually. ISD issues building, mechanical, plumbing, gas, and electrical permits for all manners of work to be done in the City. Overall ISD performs thousands of inspections per year including 800+ periodic inspections annually.

ISD has many functions, including:

- Periodic Inspections - ensure that all schools, camps, day care centers, restaurants, places of assembly, worship, and multi-unit housing are safe and code compliant
- Code Enforcement – leaf blower ordinance, complaints involving fence and sign regulations, illegal units and parking, overcrowding, work without permits, abandoned buildings, noise, vibration complaints and emergencies, special permit conditions, historic and conservation issues, construction work hours and noise violations
- Inspections - building, plumbing, gas, electrical and periodic
- Weights and Measures – inspecting scales, gas pumps and more

ISD has multiple interdepartmental interactions daily. Staff from all these areas are vital to the daily functioning of ISD. We are increasingly effective and efficient with the use of the NewGov software as we pursue the consolidation of all property information in the City as well as making all property records and files accessible and transparent for everyone working, living, or moving to the City of Newton.

FY 2025 was another changing year with key changes in our most important asset, our employees. In January 2025, we said “happy retirement” to a valuable, long-time employee Alan Gifford after 25 years of service. Upon his retirement, we enthusiastically promoted Charles (Buddy) Lamplough to the Senior Building Inspector. Buddy’s vast knowledge of the State Code and Newton Zoning ordinance is proving to be invaluable as he assists the public and his fellow inspectors. Buddy brings 22 years of experience to the position. In October 2024, Howard (Howie) Simons signed on as the new Code Enforcement Agent. Howie has been a great addition to the department, quickly getting up to speed with requests for Zoning enforcement.

**FY2025 was a standout year for our department, highlighted by the well-deserved recognition of Senior Wiring Inspector William (Billy) McDonald as Newton’s Employee of the Year.**

With over 30 years of dedicated service to the City of Newton, Billy has consistently demonstrated professionalism, expertise, and a commitment to excellence. Known for his fair and accommodating approach, he ensures contractors receive the benefit of the doubt while upholding the highest standards. Billy is also a valuable resource to his fellow inspectors, regularly sharing updates on code changes and assisting other departments with technical questions and issues.

Beyond his day-to-day responsibilities, Billy is a familiar presence at fire scenes and downed wire incidents, always ready to lend his expertise when the city needs him most. We extend our deepest gratitude to Billy for his unwavering dedication and exceptional service to the City of Newton.

### **NewGov continues to make our work more effective, efficient and transparent:**

- Building permit applications have been broken out into specific applications (for example, roofing & siding, windows & doors, etc.) thereby streamlining the review and permit turnaround and easing the process for owners and contractors, as they no longer must fill out information unnecessary for their project.
  - Interactive reports have been created for leaf blower registrations and leaf blower violations. These reports are available online [newtonma.gov/inspectional-services](http://newtonma.gov/inspectional-services).
  - Deb Finamore continues working with City departments to bring their applications online into NewGov. She is close to having all Fire Department permits available for submittal online. The City Clerk’s Office has also made available online their Business Certificate and Auto Dealerships. The next new online application coming will be an Energy Storage System multi department application with even more applications coming this year.
  - **Commissioner:** Requests to the Commissioner for Consistency Rulings, Dover Waivers and Zoning Determinations are all available online for submittal by the applicants and review by the public.
- Code Enforcement:**
- Requests for code enforcement continue to come in via the on-line portal and we work diligently to respond quickly.
  - As of October 2024, the Building inspector’s assistance with the process for investigating requests for building code and zoning enforcement has diminished now that we have a full-time Code Enforcement Agent.
  - Leaf Blower violations are continuing to be entered into NewGov and paid via the portal, by mail or in person.
  - The Office Information Coordinator and staff are working with Code Enforcement on requests and letters. They are also assisting with processing Leaf Blower registrations, violation ticket mailing, violation payments and mailings to contractors.

**School Safety:**

- A goal for FY2026 is to work with the School Safety Task Force on reviewing all School buildings for compliance with the building and safety codes with the assistance of NewGov.
- Periodic Inspections utilize the NewGov system and renewal process to ensure requirements are met for all schools, camps, day care centers, restaurants, places of assembly, worship, and multi-unit housing are safe and code compliant.

**Inspectors:**

- Inspectors review applications via the NewGov portal and communicate with the applicants through the system. This makes the process easier throughout the day and allows another person to pick up where they left off to keep the inspection process moving along.
- Building Inspectors are scheduling inspections for current jobs and reviewing open permits at the same time to help close older permits while at the property.

**Property Files:**

- Because of the implementation of NewGov, the Office Information Coordinator and staff now have more time to focus on other issues in the office, prioritizing scanning property files so more past information is easily accessible online. As of February, we have completed all addresses through the letter L. Anyone can log into the portal and view complete property files for streets A-L.

**Weights & Measures:**

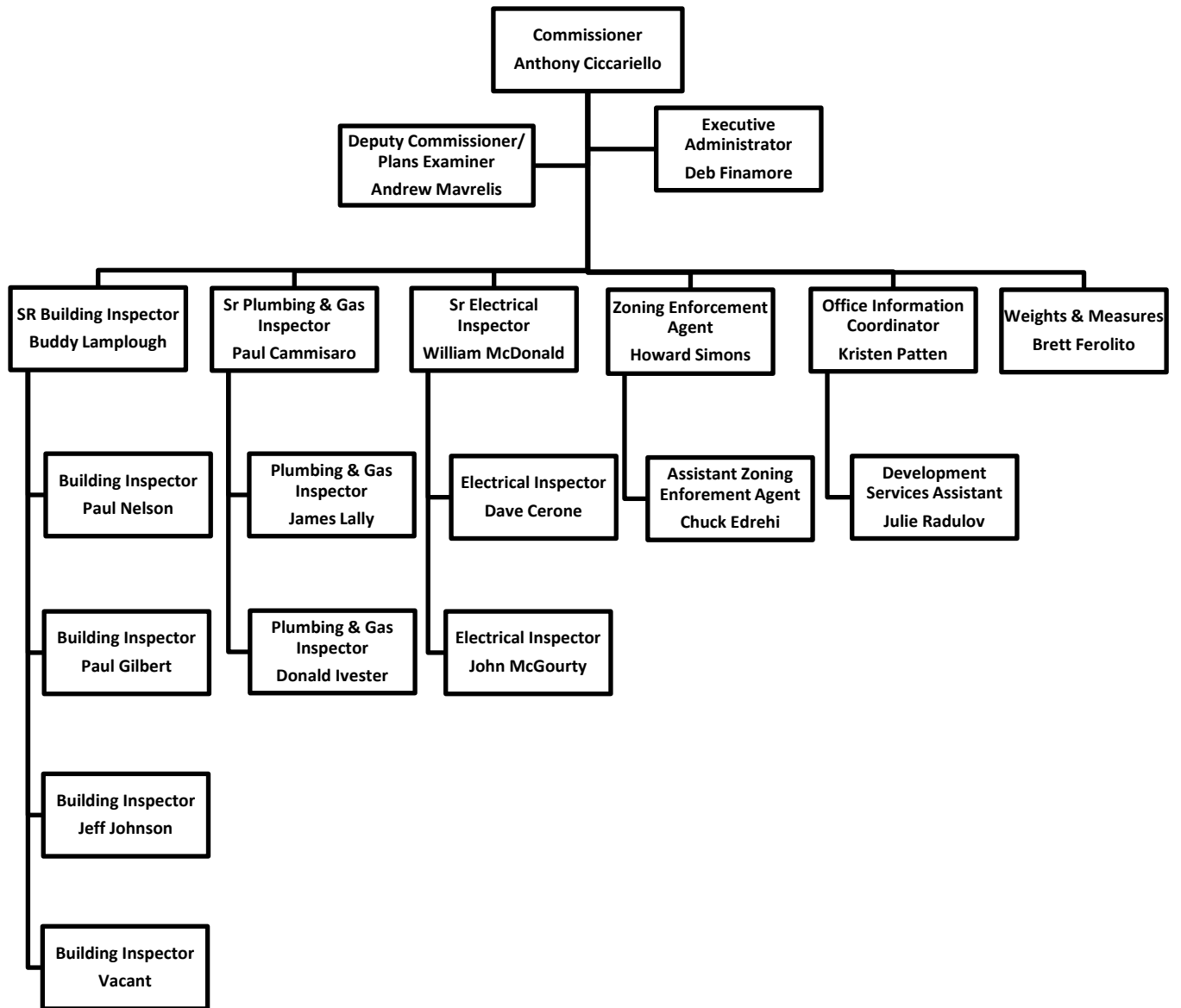
- Continues to check devices that weigh and measure, such as scales and gas pumps on a yearly basis.
- Actively creating records for inspections and tracking in NewGov along with payment processing.

ISD continues to be dedicated to efficiency and effectiveness, customer service and responsiveness, and the advancement of all our employees, including advanced certifications and educational opportunities.

*Anthony Ciccariello*

Anthony Ciccariello, Commissioner

# INSPECTIONAL SERVICES



# Financial and Operating Highlights

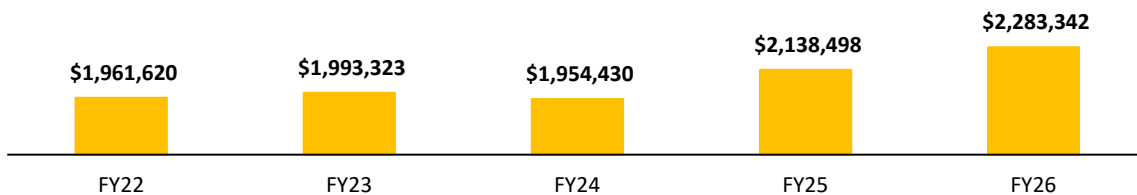
## Financial Highlights

	< -----Actual ----->				Original	Proposed
	FY2022	FY2023	FY2024	FY2025	FY2026	
<b>Expenditure by Department</b>						
Admin	\$ 675,551	\$ 728,550	\$ 617,996	\$ 757,084	\$ 815,349	
Bldg Code Enf.	\$ 559,678	\$ 538,353	\$ 563,715	\$ 573,990	\$ 587,834	
Weights & Measures	\$ 75,512	\$ 87,211	\$ 96,382	\$ 104,177	\$ 79,085	
Mech Inspections	\$ 650,879	\$ 639,209	\$ 676,337	\$ 703,247	\$ 801,074	
<b>Total</b>	<b>\$ 1,961,620</b>	<b>\$ 1,993,323</b>	<b>\$ 1,954,430</b>	<b>\$ 2,138,498</b>	<b>\$ 2,283,342</b>	
<b>% Incr</b>		1.62%	-1.95%	9.42%	6.77%	

## Personnel

Full-Time Employees	19	19	19	18	18
Part-Time Employees	0	1	1	1	3
<b>Total</b>	<b>19</b>	<b>20</b>	<b>20</b>	<b>19</b>	<b>21</b>

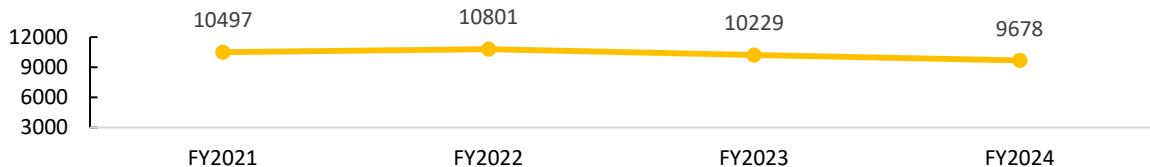
## Total Inspectional Services Expenditures



## Operating Highlights

	FY2022	FY2023	FY2024	FY2025 YTD
Building Permits	4,431	3,857	3,468	2,073
Electrical Permits	2,788	2,907	2,997	1,994
Plumbing Permits	1,523	2,112	1,978	1,245
Gas Permits	2,059	1,353	1,235	751

## Total Permits



## Enforcement Requests (October 2024-February 2025)

New	Open	Closed	Closed 30 days
114	297	151	44

## FY 2025 Building Permit Breakdowns to Date

Residential (new)	64	Commercial (new)	2
Demolition	67	Solar	131

# Inspectional Services Department

## Fiscal Year 2026 Outcomes and Strategies

The Inspectional Services Department (ISD) continues to enhance its permitting process to improve the issuance of building permits and reporting. Our workday begins at 7:00 AM, Monday through Friday, and we are constantly refining our operations to better serve the community.

Currently, ISD is piloting a program to streamline the approval process for larger residential projects requiring engineering review. This initiative could allow developers, contractors, and residents to obtain their building permits one to two weeks earlier than before.

Several additional significant changes have taken place over the past year:

- The 10th Edition of the Building Code (2021) went into effect on October 11, 2024. The 2015 code remains in its concurrency period until June 30, 2025.
- The Energy Code has been updated, easing HERS rating requirements for major alterations to existing homes from 52 to 65.

City of Newton Ordinance Updates:

- Changes to retaining wall regulations.
- A new method for calculating average grade.
- Accessory Dwelling Unit (ADU) ordinance modifications, influenced by state efforts to address housing needs.

Given these updates, ISD remains extremely busy. We hold weekly meetings to educate ourselves on new codes and ordinance changes, ensuring we provide accurate guidance to residents and contractors. Our staff are available daily at the ISD counter and by phone to assist with inquiries and support the community in navigating these evolving regulations.

---

### Outcome 2

#### Respond Effectively to Electrical Code and Fossil Free Ordinance Updates

---

During FY2025, we experienced a lot of changes: (1) the Electrical Code requirements and (2) City Council passed a Fossil Free Ordinance. Due to the changes in the Code, the Electrical Inspectors are very busy with permits, inspection requests and calls regarding all the changes. Currently we have 3 full-time Electrical Inspectors who are working very hard, keeping up with phone calls, permit approvals and inspection requests. The addition of the Fossil Free Ordinance has required a lot of work by the entire department as we are reviewing the building permit application and making property notes so that internal users are able to see immediately if the property is required to be all electric or if major renovations are all electric. Included with the all-Electric requirements are the wiring for car charging stations, installation of Solar Panels, and the installation of all electrical appliances in all new houses. There

---

### Outcome 1

#### Improve and Update Continuously Building Permits and Inspections

---

# Inspectional Services Department

## Fiscal Year 2026 Outcomes and Strategies

are some exceptions to the new Ordinance, and we are trying to keep everyone up to date with the changes and requirements for each property.

---

Throughout FY25, several new record types have been added to the NewGov portal to streamline application processes and improve accessibility. Notably, the City Clerk's office has launched the Business Certificate application, and the Fire Department has introduced the Tank Installation and Removal (non-propane) application. Additionally, Cultural Development has collaborated with Deb Finamore (ISD) and Sherri Lougee (HHS) to finalize the online rental application for the War Memorial space.

---

### Outcome 3

Expand the Permitting and Information Management System, NewGov

---

As we continue to expand the record types available online, we are also revisiting and refining previously implemented applications to take full advantage of the system's capabilities. Currently, our team is working with the Fire Department to develop a new application for Energy Storage Systems, specifically for battery backup units associated with Solar Panel projects.

Our goal is to create a more efficient and user-friendly process by developing:

1. A single application between the Building Department and the Fire Department.
2. A separate application between the Electrical Department and the Fire Department.

By consolidating applications and reducing the number of department-specific forms, we aim to minimize confusion and enhance efficiency for applicants. We will continue refining these processes to ensure a seamless experience for both internal users and the public.



FUND: 0001 - GENERAL FUND  
DEPARTMENT: 220 - INSPECTIONAL SERVICES

CITY OF NEWTON BUDGET  
DEPARTMENT LEGAL LEVEL OF CONTROL

	ACTUAL 2022	ACTUAL 2023	ACTUAL 2024	ORIGINAL 2025	RECOMMENDED 2026	CHANGE 2025 to 2026
<b>INSPECTIONAL SERVICES SUMMARY</b>						
51 - PERSONNEL SERVICES	1,684,528	1,682,466	1,619,231	1,730,545	1,885,447	154,902
52 - EXPENSES	42,321	36,639	43,643	55,800	59,360	3,560
57 - FRINGE BENEFITS	234,441	274,217	291,556	352,153	338,535	-13,618
<b>TOTAL DEPARTMENT</b>	<b>1,961,290</b>	<b>1,993,323</b>	<b>1,954,430</b>	<b>2,138,498</b>	<b>2,283,342</b>	<b>144,844</b>
<b>INSPECTIONAL SVS ADMIN</b>						
51 - PERSONNEL SERVICES	557,879	598,068	495,334	600,864	645,671	44,807
52 - EXPENSES	32,477	27,727	32,918	42,800	46,300	3,500
57 - FRINGE BENEFITS	84,863	102,755	89,744	113,420	123,378	9,958
<b>TOTAL INSPECTIONAL SVS ADMIN</b>	<b>675,220</b>	<b>728,550</b>	<b>617,996</b>	<b>757,084</b>	<b>815,349</b>	<b>58,265</b>
<b>BLDG CODE/ZONING ENFMT</b>						
51 - PERSONNEL SERVICES	487,122	464,531	480,058	483,842	507,076	23,234
52 - EXPENSES	1,990	1,336	2,497	3,050	3,250	200
57 - FRINGE BENEFITS	70,567	72,487	81,160	87,098	77,508	-9,590
<b>TOTAL BLDG CODE/ZONING ENFMT</b>	<b>559,678</b>	<b>538,353</b>	<b>563,715</b>	<b>573,990</b>	<b>587,834</b>	<b>13,844</b>
<b>WEIGHTS &amp; MEASURES</b>						
51 - PERSONNEL SERVICES	71,496	67,882	69,648	71,997	74,833	2,836
52 - EXPENSES	2,934	1,238	2,564	3,250	3,110	-140
57 - FRINGE BENEFITS	1,082	18,091	24,169	28,930	1,142	-27,788
<b>TOTAL WEIGHTS &amp; MEASURES</b>	<b>75,512</b>	<b>87,211</b>	<b>96,382</b>	<b>104,177</b>	<b>79,085</b>	<b>-25,092</b>
<b>MECHANICAL INSPECTIONS</b>						
51 - PERSONNEL SERVICES	568,031	551,986	574,191	573,842	657,867	84,025
52 - EXPENSES	4,919	6,338	5,664	6,700	6,700	0
57 - FRINGE BENEFITS	77,928	80,885	96,482	122,705	136,507	13,802
<b>TOTAL MECHANICAL INSPECTIONS</b>	<b>650,879</b>	<b>639,209</b>	<b>676,337</b>	<b>703,247</b>	<b>801,074</b>	<b>97,827</b>

FUND: 0001 - GENERAL FUND  
DEPARTMENT: 220 - INSPECTIONAL SERVICES

CITY OF NEWTON BUDGET  
DEPARTMENTAL DETAIL

	ACTUAL 2022	ACTUAL 2023	ACTUAL 2024	ORIGINAL 2025	RECOMMENDED 2026	CHANGE 2025 to 2026
<b>220 - INSPECTIONAL SERVICES</b>						
<b>0122040 - INSPECTIONAL SVS ADMIN</b>						
<b>PERSONNEL SERVICES</b>						
511001 FULL TIME SALARIES	498,588	533,181	431,480	541,564	573,171	31,607
511101 PART TIME < 20 HRS/WK	0	0	12,780	30,000	37,000	7,000
512001 SEASONAL WAGES	10,720	28,920	19,520	0	0	0
513010 REGULAR OVERTIME	44,921	26,166	27,754	25,000	30,000	5,000
514001 LONGEVITY	2,650	3,800	2,300	2,800	4,000	1,200
515003 SPECIAL LEAVE BUY BACK		4,000	0	0	0	0
515005 BONUSES	0	500	0	0	0	0
515102 CLEANING ALLOWANCE	1,000	1,500	1,500	1,500	1,500	0
<b>TOTAL PERSONNEL SERVICES</b>	<b>557,879</b>	<b>598,068</b>	<b>495,334</b>	<b>600,864</b>	<b>645,671</b>	<b>44,807</b>
<b>EXPENSES</b>						
524010 OFFICE EQUIPMENT R-M	200	0	0	200	200	0
524030 MOTOR VEHICLE R-M	141	1,335	1,137	5,000	5,000	0
527400 RENTAL - EQUIPMENT	3,594	2,899	3,676	7,000	7,000	0
531900 TRAINING EXPENSES	40	725	0	0	0	0
534010 TELEPHONE	1,043	916	911	1,100	1,100	0
534020 CELLULAR TELEPHONES	14,290	13,808	13,962	15,500	16,500	1,000
534100 POSTAGE	1,134	2,220	1,049	1,500	1,500	0
534200 PRINTING	3,997	2,208	4,239	2,500	2,500	0
542000 OFFICE SUPPLIES	4,753	3,471	2,809	3,500	3,500	0
548400 VEHICLE REPAIR PARTS	1,808	0	4,251	2,500	5,000	2,500
558100 UNIFORMS/PROTECTIVE	500	0	475	500	500	0
558500 COMPUTER SUPPLIES	727	0	0	2,500	2,500	0
559200 BOOKS/MANUALS/PERIODI	0	0	34	500	500	0
571000 VEHICLE USE REIMBURSE	0	53	0	0	0	0
571100 IN-STATE CONFERENCES	332	0	0	0	0	0
573000 DUES & SUBSCRIPTIONS	250	93	375	500	500	0
<b>TOTAL EXPENSES</b>	<b>32,809</b>	<b>27,727</b>	<b>32,918</b>	<b>42,800</b>	<b>46,300</b>	<b>3,500</b>
<b>FRINGE BENEFITS</b>						
57DENT DENTAL INSURANCE	1,670	1,794	1,612	1,313	1,816	503
57HLTH HEALTH INSURANCE	68,555	84,595	71,827	86,361	94,374	8,013
57LIFE BASIC LIFE INSURANCE	71	109	114	114	114	0
57MEDA MEDICARE PAYROLL TAX	7,478	7,621	6,411	8,386	8,927	541
57OPEB OPEB CONTRIBUTION	7,089	8,637	9,782	17,246	18,147	901
<b>TOTAL FRINGE BENEFITS</b>	<b>84,863</b>	<b>102,755</b>	<b>89,744</b>	<b>113,420</b>	<b>123,378</b>	<b>9,958</b>
<b>TOTAL INSPECTIONAL SVS ADMIN</b>	<b>675,551</b>	<b>728,550</b>	<b>617,996</b>	<b>757,084</b>	<b>815,349</b>	<b>58,265</b>

<b>CITY OF NEWTON BUDGET DEPARTMENTAL DETAIL</b>
--

		ACTUAL 2022	ACTUAL 2023	ACTUAL 2024	ORIGINAL 2025	RECOMMENDED 2026	CHANGE 2025 to 2026
<b>0122041 - BLDG CODE/ZONING ENFMT</b>							
<b>PERSONNEL SERVICES</b>							
511001	FULL TIME SALARIES	472,694	452,079	466,408	470,842	490,326	19,484
513010	REGULAR OVERTIME	353	1,324	2,413	0	5,000	5,000
514001	LONGEVITY	5,000	5,000	5,000	5,500	4,250	-1,250
515006	VACATION BUY BACK	6,575	3,628	3,737	5,000	5,000	0
515102	CLEANING ALLOWANCE	2,500	2,500	2,500	2,500	2,500	0
<b>TOTAL PERSONNEL SERVICES</b>		<b>487,122</b>	<b>464,531</b>	<b>480,058</b>	<b>483,842</b>	<b>507,076</b>	<b>23,234</b>
<b>EXPENSES</b>							
531900	TRAINING EXPENSES	150	515	420	1,250	1,200	-50
542000	OFFICE SUPPLIES	0	41	0	0	0	0
558000	PUBLIC SAFETY SUPPLIES	615	0	0	750	1,000	250
558100	UNIFORMS/PROTECTIVE	1,000	555	2,002	600	600	0
573000	DUES & SUBSCRIPTIONS	225	225	75	250	250	0
577100	PROFESSIONAL LICENSES	0	0	0	200	200	0
<b>TOTAL EXPENSES</b>		<b>1,990</b>	<b>1,336</b>	<b>2,497</b>	<b>3,050</b>	<b>3,250</b>	<b>200</b>
<b>FRINGE BENEFITS</b>							
57DENT	DENTAL INSURANCE	1,406	1,406	1,406	1,411	1,110	-301
57HLTH	HEALTH INSURANCE	56,500	58,308	66,412	71,857	58,383	-13,474
57MEDA	MEDICARE PAYROLL TAX	6,745	6,404	6,594	6,950	7,208	258
57OPEB	OPEB CONTRIBUTION	5,916	6,369	6,748	6,880	10,807	3,927
<b>TOTAL FRINGE BENEFITS</b>		<b>70,567</b>	<b>72,487</b>	<b>81,160</b>	<b>87,098</b>	<b>77,508</b>	<b>-9,590</b>
<b>TOTAL BLDG CODE/ZONING ENFMT</b>		<b>559,678</b>	<b>538,353</b>	<b>563,715</b>	<b>573,990</b>	<b>587,834</b>	<b>13,844</b>

<b>CITY OF NEWTON BUDGET DEPARTMENTAL DETAIL</b>
--

	ACTUAL 2022	ACTUAL 2023	ACTUAL 2024	ORIGINAL 2025	RECOMMENDED 2026	CHANGE 2025 to 2026
<b>0122044 - WEIGHTS &amp; MEASURES</b>						
<b>PERSONNEL SERVICES</b>						
511001 FULL TIME SALARIES	71,496	67,882	69,648	71,997	74,158	2,161
514001 LONGEVITY	0	0	0	0	675	675
<b>TOTAL PERSONNEL SERVICES</b>	<b>71,496</b>	<b>67,882</b>	<b>69,648</b>	<b>71,997</b>	<b>74,833</b>	<b>2,836</b>
<b>EXPENSES</b>						
531900 TRAINING EXPENSES	0	0	0	100	100	0
534010 TELEPHONE	42	40	40	100	60	-40
542000 OFFICE SUPPLIES	162	0	0	250	250	0
543200 SMALL TOOLS	1,710	319	300	0	0	0
548000 GASOLINE	766	639	672	900	900	0
548200 TIRES & TIRE SUPPLIES	0	0	0	1,000	1,000	0
548400 VEHICLE REPAIR PARTS	0	78	0	0	0	0
558000 PUBLIC SAFETY SUPPLIES	254	162	565	300	600	300
558100 UNIFORMS/PROTECTIVE	0	0	987	300	200	-100
571100 IN-STATE CONFERENCES	0	0	0	100	0	-100
573000 DUES & SUBSCRIPTIONS	0	0	0	200	0	-200
<b>TOTAL EXPENSES</b>	<b>2,934</b>	<b>1,238</b>	<b>2,564</b>	<b>3,250</b>	<b>3,110</b>	<b>-140</b>
<b>FRINGE BENEFITS</b>						
57DENT DENTAL INSURANCE	0	453	501	503	0	-503
57HLTH HEALTH INSURANCE	0	16,713	22,753	24,626	0	-24,626
57LIFE BASIC LIFE INSURANCE	52	57	57	57	57	0
57MEDA MEDICARE PAYROLL TAX	1,030	867	859	1,044	1,085	41
57OPEB OPEB CONTRIBUTION	0	0	0	2,700	0	-2,700
<b>TOTAL FRINGE BENEFITS</b>	<b>1,082</b>	<b>18,091</b>	<b>24,169</b>	<b>28,930</b>	<b>1,142</b>	<b>-27,788</b>
<b>TOTAL WEIGHTS &amp; MEASURES</b>	<b>75,512</b>	<b>87,211</b>	<b>96,382</b>	<b>104,177</b>	<b>79,085</b>	<b>-25,092</b>

<b>CITY OF NEWTON BUDGET DEPARTMENTAL DETAIL</b>
--

		ACTUAL 2022	ACTUAL 2023	ACTUAL 2024	ORIGINAL 2025	RECOMMENDED 2026	CHANGE 2025 to 2026
<b>0122049 - MECHANICAL INSPECTIONS</b>							
<b>PERSONNEL SERVICES</b>							
511001	FULL TIME SALARIES	555,807	536,495	555,325	562,442	602,163	39,721
511102	PART TIME > 20 HRS/WK	0	0	0	0	40,154	40,154
513010	REGULAR OVERTIME	4,368	2,952	5,654	0	0	0
514001	LONGEVITY	3,000	4,000	4,900	4,400	6,550	2,150
515006	VACATION BUY BACK	1,856	5,539	5,312	4,000	6,000	2,000
515102	CLEANING ALLOWANCE	3,000	3,000	3,000	3,000	3,000	0
<b>TOTAL PERSONNEL SERVICES</b>		<b>568,031</b>	<b>551,986</b>	<b>574,191</b>	<b>573,842</b>	<b>657,867</b>	<b>84,025</b>
<b>EXPENSES</b>							
531900	TRAINING EXPENSES	2,085	3,184	1,315	3,000	3,000	0
543200	SMALL TOOLS	803	0	0	900	900	0
558000	PUBLIC SAFETY SUPPLIES	0	0	225	500	500	0
558100	UNIFORMS/PROTECTIVE	1,137	1,060	2,867	1,300	1,300	0
573000	DUES & SUBSCRIPTIONS	295	1,695	858	500	500	0
577100	PROFESSIONAL LICENSES	599	399	399	500	500	0
<b>TOTAL EXPENSES</b>		<b>4,919</b>	<b>6,338</b>	<b>5,664</b>	<b>6,700</b>	<b>6,700</b>	<b>0</b>
<b>FRINGE BENEFITS</b>							
57DENT	DENTAL INSURANCE	1,504	1,504	1,504	1,509	2,012	503
57HLTH	HEALTH INSURANCE	62,144	64,629	78,606	102,023	113,497	11,474
57LIFE	BASIC LIFE INSURANCE	104	114	114	114	114	0
57MEDA	MEDICARE PAYROLL TAX	7,785	7,535	7,792	8,283	9,452	1,169
57OPEB	OPEB CONTRIBUTION	6,392	7,104	8,467	10,776	11,432	656
<b>TOTAL FRINGE BENEFITS</b>		<b>77,928</b>	<b>80,885</b>	<b>96,482</b>	<b>122,705</b>	<b>136,507</b>	<b>13,802</b>
<b>TOTAL MECHANICAL INSPECTIONS</b>		<b>650,879</b>	<b>639,209</b>	<b>676,337</b>	<b>703,247</b>	<b>801,074</b>	<b>97,827</b>
<b>TOTAL INSPECTIONAL SERVICES</b>		<b>1,961,621</b>	<b>1,993,323</b>	<b>1,954,430</b>	<b>2,138,498</b>	<b>2,283,342</b>	<b>144,844</b>